

AGENDA FOR BOARD OF DIRECTORS
AUBURN SCHOOL DISTRICT NO. 408
Monday, May 23, 2016

- I. TIME AND PLACE
 - 1. 7 p.m. at the James P. Fugate Administration Building
- II. ROLL CALL
 - 1. Roll call of board members
- III. PLEDGE OF ALLEGIANCE
- IV. AUDIENCE PARTICIPATION
 - 1. Written communications
 - 2. Scheduled communications
 - 3. Unscheduled communications
 - 4. Community groups and organizations
- V. LEGISLATIVE UPDATE
- VI. STUDENT AND STAFF RECOGNITION
 - 1. Recognition of student
 - 2. Recognition of staff
 - 3. Teachers of the year
- VII. STUDENT PARTICIPATION
 - 1. Lea Hill Elementary School PTA report
 - 2. Activity/athletic report
 - 3. Requests for travel
- VIII. SCHOOL PROGRAMS AND STUDENT ACHIEVEMENT
 - 1. White River Valley Museum and Mary Olson Farm
 - 2. Mt. Baker Middle School 2015-16 PLC presentation
 - 3. Approval of inter-district agreements
 - 4. Approval of agreements providing services
 - 5. 2015-16 career and technical education curriculum review
 - 6. Advanced placement seminar course
 - 7. Advance placement English language and composition curriculum
- IX. PERSONNEL
 - 1. Certificated and classified personnel report
 - 2. Requests for travel

X. BUILDING PROGRAM

1. Auburn Riverside High School ballfield and site improvements project
2. Auburn High School modernization and reconstruction project
3. Auburn High School—work in progress report

XI. FINANCE

1. Vouchers
2. Financial statements

XII. DIRECTORS

1. Approval of minutes
2. Healthy Kids-Healthy Schools letter of support
3. Special board meeting
4. Discussion
5. Executive session

LEGISLATIVE UPDATE

The board will discuss legislative items.

STUDENT AND STAFF RECOGNITION

1. Recognition of Student

The Auburn School District Board of Directors will recognize Damien Abbott, a fifth grade student at Lea Hill Elementary, for being an outstanding student.

Damien is a smart, funny, compassionate and hard-working student with the most infectious laugh.

When Damien started in the Pathways program two years ago, he was shy, somewhat guarded and lacked confidence. He has blossomed into a confident, respectful student who helps his classmates. He is friendly, polite and sincere in all of his interactions with staff and students. He strives to include everyone around him.

Damien also has overcome some academic struggles and has shown amazing growth in his schoolwork. He is committed to completing his work accurately and on-time, with a positive attitude. He has been so successful that he is exiting the Pathways program. He will be attending Cascade Middle School next year and is excited for the next step in his school journey.

Music is Damien's passion! His knowledge of music is way beyond his years. He knows about all genres of music and loves current rock and classic rock. Sometimes he breaks out in song! He also loves to dance. He enjoys video games and movies. He hopes to be a professional snowboarder when he grows up.

His Pathways teachers have no doubt he will be successful at Cascade and they are very proud of his accomplishments.

2. Recognition of Staff

The Auburn School District Board of Directors will recognize Deanna Holbrook, English language learner specialist at Pioneer, for her outstanding service.

Deanna earned her bachelor's at Oklahoma Christian University and her master's of science at the University of Washington.

She began her career in Auburn 15 years ago, teaching first grade at Gildo Rey and Alpac before coming to Pioneer in 2011.

Instructional specialist Jay Massimino said Deanna is a crucial part of Pioneer's leadership and she promotes positivity to staff and students through innovative ideas. He said she is a master teacher that critically understands how to use data to promote student growth and staff development to meet the needs of Pioneer students.

"I love coming to work and look forward to it every day," Deanna said. "The students are a joy to spend the day with. I work with amazing people and I love Debra Gary's ideas."

Deanna works with numerous para-educators in her role and she credits them for being instrumental in supporting students with reading, math, and positive attention.

A native of Port Orchard, Deanna currently lives in Lake Tapps. She has been married to husband Mitch for 15 years and they have two children, Sophia, age eight and Trey, age nine.

In her off time, Deanna loves to play with her kids, hike, camp and read. Her family takes a big camping vacation to the ocean every summer.

4. Teachers of the Year

High School-Jim Wickens, Auburn Riverside

Jim has been a teacher for 30 years and the last 16 of those years have been at Riverside. He teaches multiple levels of woodworking and design, is the SkillsUSA advisor and is the work-based learning coordinator.

Jim's work with students prepares them with the technical knowledge and competencies needed for today's work force. He takes great pride in seeing the growth of students from their freshman year to their senior year.

He also has a firm belief in instilling the importance of community service in his students. He has been central in the Riverside Lily Pad project commemorating one of his student who passed away. The students created decorated boards to fit on IV poles for kids in hospitals. The project was featured on The Today Show and requests for the plans have come from all over the world. He has spent countless hours with the students cutting, sanding and preparing the lily pads.

In addition to his in-class work with students, Jim is committed to Career and Technical Education. He is the CTE representative to the Auburn Education Association Executive Board, attends business and industry meetings, served on the credit equivalency task force and promotes CTE through his leadership of the Riverside SkillsUSA club.

With experience as a cabinet maker, carpenter and a master's degree from Central in Occupational Education Administration, Jim is dedicated to his profession. "I look forward to coming to work every day," he said. "I love the interaction with the students."

Principal Dave Halford said Jim is dedicated to the success of his students and he spends hours outside of the classroom helping them master the woodworking trade.

On being selected high school teacher of the year, Jim said, "It's an honor to be chosen. Auburn has so many outstanding educators."

Jim has been married to Kolleen for 34 years. They have one son, Matthew, who is a structural engineer in California. In his off time, Jim enjoys traveling, camping and golfing whenever he can.

Middle School–Kelly Portmann, Rainier

Kelly is in her 21st year teaching 6th grade at Rainier. After three years teaching in Kent, she found her home at Rainier.

"I love sixth graders," she said. "They are fun and funny and I love seeing their growth throughout the year."

Principal Ben Talbert said students are consistently at the center of Kelly's work. There is strong evidence of instructional purpose and high levels of student engagement. She is skilled at working with students who have challenges and are challenging.

In addition to her strong teaching skills, Kelly is a leader in her building and in the district. She has been a team leader, is in the ATLA 2.0 group, serves on Rainier's Culture and Climate committee and is mentoring a new 6th grade teacher. She also has had leadership positions in the community as a Cub Scout leader and with Auburn Young Life.

One of her passions is student leadership and she co-coordinates the Where Everyone Belongs (WEB) program, which supports the development of 8th grade mentor leaders and pairs them with incoming 6th graders to assist in a smooth transition to middle school. The WEB team hosts a summer orientation day and 85 percent of the 6th graders participate. The 8th graders support the 6th graders and there are additional social events they host throughout the year to stay connected.

Kelly grew up in Kent and earned a bachelor's degree from Western and her master's degree in Curriculum and Instruction from City University. She has been married to husband Rob for 21 years and lives in Auburn. They have two boys who attend Auburn Mountainview.

Kelly said being middle school teacher of the year is exciting and humbling. "Educators are the hardest working people I know."

Rob works for Alaska Airlines, so in her off-time, her family does a lot of traveling. She also enjoys working in her garden and reading.

Elementary-Alisa Louie, Evergreen Heights

Alisa loves to be a positive role model for students. At every opportunity, she jumps in to be involved with as many students as possible. After teaching 2nd and 4th grade, Alisa is now a learning specialist and ELL coach, in her ninth year at Evergreen Heights.

Principal Anne Gayman said Alisa impacts the school, the district and the community in many ways. She volunteers countless hours as the ASB teacher representative. She is responsible for facilitating school fundraisers, is the teacher/PTA representative, meets regularly with

students and supports students in leadership responsibilities throughout the community.

For the last two years, Alisa has co-coordinated the annual food drive. She has worked with students within the community to collect food. She walked the neighborhoods, reached out to businesses and even contacted Senator Joe Fain to support the cause. She regularly goes above and beyond to support children within and outside the classroom. She teaches students to be leaders with a responsibility to citizenship in our society.

When Alisa is not working directly with students, she is assisting teachers to become better in their job roles. She volunteers with PSES and writes a BLOG on CCSS highlighting resources to support learning and instruction. Her goal is to assist teachers in the transition from state standards to Common Core. Alisa was selected to score National Boards after receiving her own National Board Certification in 2011. She often is chosen by state and federal educators to participate and support educational reform.

Alisa said being chosen as the elementary teacher of the year is a reflection of the entire building at Evergreen Heights. "Everyone is doing amazing work."

A native of Renton, Alisa earned her bachelor's at Western. Alisa has been married to Michael for five years and they have two dogs. When not working, she and Michael volunteer for a transitional housing non-profit in King County. Alisa also likes to travel, host dinner parties, and be outdoors.



Lea Hill PTA

“I am only one, but I am one. I cannot do everything, but I can do something. And I will not let what I cannot do interfere with what I can do. “

~Edward Everett Hale

Lea Hill School Profile

Population with ECE and Head Start 505

Population without ECE 393

ELL % 19%

Free and Reduced % 67.7%

Teachers we help support 32



STUDENT OF THE MONTH LUNCHESES



FIELD TRIPS





ROBOTICS CLUB



WHAT DOES THE PTA DO FOR LEA HILL?

- ◉ Field Trips
- ◉ Technology
- ◉ End of Year Carnival
- ◉ Popcorn
- ◉ Fun Assemblies
- ◉ AR Prizes
- ◉ Student of the Month
Lunches

Family Events

Pumpkin Carving
Holiday Craft Night
Curriculum/Multi-Cultural
Night
BINGO/ Auction
Donuts with Dads
Muffins with Moms
Book Fair
Talent Show

TROT-A-THON

\$11,900



TOP PRIZE = LIMO RIDE



HOW WE EARN MONEY AT LEA HILL

BINGO AND SILENT AUCTION

\$5,300



EARNED 4TH PLACE
\$1,500



A FEW MORE...

- McTeacher Night \$1,020
- Box Tops! \$700
- Labels for Education – points for school supplies
- Coke Rewards – points for school supplies
- Rebates! \$1,385
 - E-scrips, Kroger Rewards, Amazon Smile Rewards

OUR MEMBERS

◎ Membership:

- 29 – total members
 - 17 – parents
 - 10 – staff
 - 2 – spouses of staff
 - 4 – Board members

**WE COULD NOT DO ANY
OF THIS WITHOUT A
SUPPORTIVE STAFF!**



STUDENT PARTICIPATION

1. Lea Hill Elementary School PTA Report

Ryan Foster, associate superintendent of principal leadership and school programs, will introduce Ed Herda, Lea Hill Elementary School principal, who will introduce Jenny Wheeler, PTA president; Stephanie Beeksma and Michele Caillier, PTA co-secretaries; and Allison Abrahamse, PTA treasurer. The team will share a brief PowerPoint presentation about the Lea Hill Elementary School PTA report and answer questions from the board.

2. Activity/Athletic Report-Mt. Baker Middle School Orchestra Program

Ryan Foster will introduce Greg Brown, Mt. Baker Middle School principal, who will introduce Melinda Wharton, Mt. Baker Middle School orchestra teacher, who will introduce Rayna Ojas, Allie Bilson, Jennifer Bell, Bryan Heredia, Angela Duran and Gabriel Go, students, to present the Mt. Baker Middle School orchestra program and answer questions from the board.

3. Requests for Travel

a. One Auburn High School student requests permission to travel to Spokane, Tuesday to Wednesday, May 24-25. The purpose of the trip is to compete in the state golf tournament. Lodging will be at the Hampton Inn, meals will be at local restaurants, and travel will be by rental car. All travel, staff lodging, and meal expenses will be paid by Auburn School District athletics, and the student will stay overnight with parents. Jeremy Sagle, Auburn High School coach, requests permission to accompany the student. No substitute will be needed.

b. Four Auburn Riverside High School students and eight Auburn Mountainview High School students request permission to travel to Kennewick, Thursday to Saturday, May 26-28. The purpose of the trip is to compete in the WIAA state tennis tournament. Lodging will be at the Holiday Inn Express and the Hilton Garden, meals will be at local restaurants, and travel will be by rental cars. All travel, meal, and lodging expenses for students will be paid by ASB funds, and coach and substitute expenses will be paid by Auburn School District athletic funds. Bruce Diehl, Auburn Riverside High School coach, and Kay Lorrain, Auburn Mountainview High School coach, request permission to accompany the students. Two substitutes will be needed for two days.

c. Fifty-three Auburn Riverside High School students request permission to travel to Vancouver, British Columbia, Canada, Friday to Monday, May 27-30. The purpose of the trip is to perform at the Heritage Music Festival. Lodging and meals will be at the Vancouver B.C. College and travel will be by charter bus. All travel, meal, and lodging expenses will be paid by ASB Booster funds and substitute expenses will be paid by district funds. Jon Stenson, Auburn River-

side High School teacher, requests permission to accompany the students. One substitute will be needed for one day.

Rob and Allison McKeever, Tina Werden, Kimberly Smith, Lourdes Arango, Shelle Harrison, and Mike and Jodie Hamm, parent chaperones, requests permission to accompany the students.

- d. Twenty Auburn Mountainview High School students request permission to travel to Olympia, Friday to Saturday, May 27-28. The purpose of the trip is to compete in the state softball tournament. Lodging will at the Holiday Inn-Candlewood, meals will be at local restaurants, and travel will be by school bus. ASB funds will cover lodging and meal expenses for students and substitute costs for two coaches. ASB Booster funds will cover transportation and substitute expenses for one coach. Karl Steffin, Alicia Thompson, and Kady Vanderhoof, Auburn Mountainview High School coaches, request permission to accompany the students. Three substitutes will be needed for one day.

Kim Hagen, parent chaperone, requests permission to accompany the students.

- e. Forty Auburn Riverside High School students request permission to travel to Leavenworth, Saturday to Sunday, June 11-12. The purpose of the trip is to perform at the Orchestra Tour to Leavenworth. Lodging will be at the Alpine Rivers hotel, meals will be at local restaurants, and travel will be by charter bus. All travel and lodging expenses will be paid by ASB funds and meals will be paid by ASB and student funds. Elsa Fager, Auburn Riverside High School orchestra teacher, requests permission to accompany the students. No substitute will be needed.

Darren Wohlmacher, Lourdes Arango, and Mrs. Cruz, parent chaperones, request permission to accompany the students.

- f. Eight Auburn Riverside High School students request permission to travel to Tigard, Oregon, Thursday to Sunday, June 23-26. The purpose of the trip is to attend the National Association of Student Councils Conference. Lodging will at the Embassy Suites hotel, meals will be at local restaurants, and travel will be by charter bus. All travel, meal, and lodging expenses will be paid by student-raised ASB funds. Meri Benedict, Auburn Riverside High School activities director, requests permission to accompany the students. One substitute will be needed for two days and will be covered by Auburn School District athletic funds.

Recommendation:

That the above trips be approved as requested.

SCHOOL PROGRAMS AND STUDENT ACHIEVEMENT

1. White River Valley Museum and Mary Olson Farm

Rhonda Larson, assistant superintendent of family engagement and student success, will introduce Rachael McAlister and Patricia Cosgrove, White River Valley Museum and Mary Olson Farm Curator of Education and Director, respectively, who will present a follow-up on 2015-16 field trips to the White River Valley Museum and to the Mary Olson Farm. The team will provide a brief PowerPoint presentation and will answer questions from the board.

2. Mt. Baker Middle School 2015-16 PLC Presentation

Ryan Foster will reintroduce Greg Brown who will introduce Stacey Rogers, Mt. Baker Middle School teacher. They will give a brief PowerPoint overview of how the Professional Learning Community model has been utilized to increase student achievement at Mt. Baker Middle School and answer questions from the board. This presentation aligns with the 2013-16 District Strategic Plan: Goal 1, Objective 1, Strategy 1.

3. Approval of Inter-district Agreements Providing Services to Students with Disabilities from Auburn School District to Other Districts/Agencies

The district contracts annually with area school districts/agencies for educational programs for students with disabilities for which programs are not available in Auburn. Permission is requested to contract with the Federal Way, Kent, Highline, Renton, Tacoma, Puyallup, and Sumner School Districts, Washington State School for the Blind, Washington State Center for Childhood Deafness and Hearing Loss, Overlake Hospital Medical Center, Northwest School for the Deaf and Hard-of-Hearing (NWSDDH), Children's Hospital and Medical Center, Northwest School of Innovative Learning, Listen and Talk, Relife School, Academy Schools, Children's Institute for Learning Differences, Birth to Three Developmental Center, and Children's Therapy Center for these services, as needed.

Recommendation:	That the superintendent/designee be authorized to sign the agreements as outlined.
-----------------	--

4. Approval of Agreements Providing Services to Students with Disabilities from Enumclaw, Puyallup, Sumner, Kent, and Federal Way to Auburn

In the past, the Auburn School District has provided educational programs for students with disabilities from districts whose needs are in excess of the program opportunities there. It is requested that the superintendent/designee be authorized to sign these agreements subsequent to approval by the Enumclaw, Puyallup, Sumner, Kent, and Federal Way School Districts' boards of directors.

Recommendation: That the superintendent/designee be authorized to sign the agreements as outlined.

5. 2015-16 Career and Technical Education Curriculum Review for Aerospace Manufacturing/Welding, Automotive/Small Gas Engines, Commercial/Graphic Arts, Engineering, Woodworking and Electronics/Robotics--First Reading

Heidi Harris, assistant superintendent of student learning, will introduce Lew Keliher, CTE coordinator, who will introduce Jarred Foss, Aerospace Manufacturing and Welding teacher; Kurt Edwards, Automotive and Small Gas Engines teacher; Lonnie Chavez, Commercial and Graphic Arts teacher; Bill Sumner, Engineering teacher; Jim Wickens, Woodworking teacher; and Chris Zawislak, Electronics/Robotics teacher. The teachers will present the curriculum review for each program. Goal 1 Student Achievement, Objective 1 Professional Communities, "Instruction is aligned to state, national common core and industry standards."

Recommendation: That the board approve the 2015-16 Career and Technical Education Curriculum Review for Aerospace Manufacturing/Welding, Automotive/Small Gas Engines, Commercial/Graphic Arts, Engineering, Woodworking and Electronics/Robotics for first reading, with the second reading and adoption scheduled for Monday, June 13.

6. Advanced Placement Seminar Course--First Reading

Heidi Harris will introduce Tom McDermott, assistant director of college and career readiness, who will introduce Kristine Brown, Auburn Mountainview High School teacher, who will present the advanced placement seminar course for first reading. Goal 1 Student Achievement, Objective 5 High School Graduation, "Auburn School District and schools increase accelerated program offerings K-12 such as enrichment, advanced placement(AP), career and technical education (CTE), science, technology, engineering, math and fine arts."

Recommendation: That the proposed advanced placement seminar course be approved for first reading, with the second reading and adoption scheduled for Monday, June 13.

7. Advanced Placement English Language and Composition Curriculum--First Reading

Heidi Harris will reintroduce Tom McDermott, who will introduce Tim Wright, Auburn Riverside High School teacher; Sheryl Harmon, Auburn Senior High School teacher; Stephanie Schleicher, Auburn Senior High School teacher; and Kristine Brown, Auburn Mountainview High School teacher, to present the advanced placement English language and composition curriculum for first reading. Goal 1 Student Achievement, Objective 5 High School Graduation, "Auburn School District and schools increase accelerated program offerings K-12 such as enrichment, advanced

placement(AP), career and technical education (CTE), science, technology, engineering, math and fine arts."

Recommendation: That the proposed advanced placement English language and composition curriculum be approved for first reading, with the second reading and adoption scheduled for Monday, June 13.



Meaning Making **FIELDTRIPS**

at the White River Valley Museum and Mary Olson Farm



Fieldtrips at the Museum

Since 1998 the Museum has toured over 25,000 Kindergarteners and Third Graders from the Auburn School District.

K Curious Careers 3rd Native Cultures K- 3 Sharing Our Stories



In 2016 we will tour over 2,000 students from the Auburn School District at the Museum!

Museum Fieldtrips – NEW in 2016!

Online Booking!

Museum Fieldtrip Reservation Req

- 1 Teacher / School Information
- 2 Class Information
- 3 Fieldtrip Request
- 4 Additional Info

Teacher / School Information

Teacher Name *

First Last

School Name *

School Address *

Street Address

Address Line 2

City

State / Province / Region

United States

Postal / Zip Code

Country

Teacher Email Address *

Best Phone Number to Reach You (Classroom or cell phone please) *

- ### -

Best Time of Day to Call (ex: 10am - 11am)



Scavenger Hunts!

Fieldtrips at the Farm



8th Salmon Situation

Farm fieldtrip program piloted in 2007 and since then we have seen 17,000 students from the Auburn School District.



1st Food on the Farm

Fall 2016 we toured over 2,000 1st and 8th grade Auburn students!

Farm Fieldtrips – NEW in 2016

8th Grade Fieldtrips





1 Full Size & 2 Mini Donkeys to Meet & Pet!

Heritage Kits Available for FREE Check-out and Delivery via the District



**NEW for
2017**



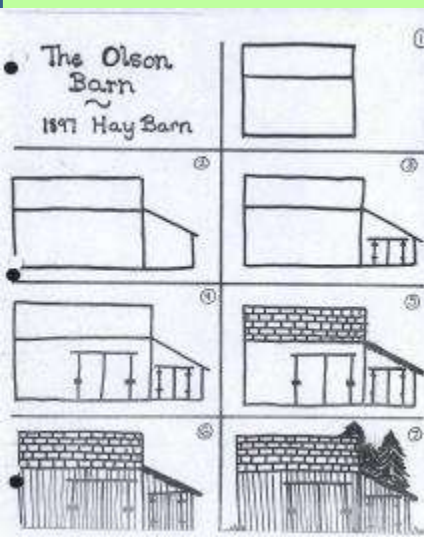
Fiberglass Cow to “Milk”!



WHITE RIVER VALLEY
MUSEUM



Thank YOU!



A decorative graphic on the left side of the slide, consisting of a network of white lines and small circles on a dark blue background, resembling a circuit board or a stylized tree structure.

PLC'S AT MT. BAKER



PLC TEAMS IN BUILDING

- English/Language Arts
- Mathematics
- Social Studies
- Science
- PE/Health
- Art
- *CTE (wood shop, visual communications)
- *Music (band/orchestra/choir/drama)
- Counselors/Special Forces
- **Library



PLC TEAMS OUTSIDE OF BUILDING

- Foreign Language (Spanish)
- Technology

ADMIN SUPPORT

Greg Brown	Steve Lewis	Chris Leverenz
Mathematics	Science	PE/Health
Language Arts	Social Studies	CTE
		Music



TIGHTS!

- We work collaboratively in teams of two or more.
- We have norms and protocols for working with one another.
- We analyze student learning, seek best practice.
- Our meetings have agendas and notes are provided to the admin.
- We use data and are results oriented to improve student learning.
- No phone calls/announcements will be pushed through from the office.
- No meetings (IEP, Parents, etc.).



7 STAGES OF PLC'S

- Filling the time
- Sharing personal practice
- Planning, planning, planning
- Developing common assessments
- Analyzing student learning
- **WE ARE HERE**
- Adapting instruction to student needs
- Reflecting on instruction



CLOSE CONNECTION TO TPEP

- Teacher use of formative assessment data (A6)
- Collaboration with peers & admin to improve student learning (PCC1)
- Professional and collegial relationships (PCC2)
- Communication within the school community about student progress (PCC4)



PE/HEALTH

- Our Health and Fitness PLC's focused on the following:
- Fitnessgram Fitness Testing- student assessment results, data comparisons to see area of growth and areas of concern. Adjusting instruction to meet the fitness needs of our students.
- Health and Fitness CBA's. Assessment data.
- Curriculum mapping/calendar




INSTRUCTIONAL TECHNOLOGY

- Focus: Curriculum alignment – Same practices, skills taught, assessments, with similar timelines between the 2 schools.
- Successes: Alignment of our focus and also adjusting what we teach to stay with current technology and practices.




ELA

- ELA has focused on the Targets and Instructional Calendar and sharing instructional strategies on scaffolding lessons.
 - Our major success was looking at data after each formative reading assessment and after each PT, for a total of 9 times.
 - We discussed what students did well and where they needed more scaffolding. We also talked about the specific assessment questions, if several students were not successful, and will suggest changes to the IS team.
- 




SOCIAL STUDIES

- Focus on alignment with all grade levels on scope and sequence.
 - This allows for common formative assessments in order to review data together.
 - Focusing on PLC questions 3 and 4 this year...frequently have to revisit question 2 though as we make changes/adaptations to our common assessments.
- 



SCIENCE

- Science is working to align materials that match the new NGSS standards.
 - We are working to stay consistent with each other in our grade levels with materials.
 - We spend PLC's making common assessments.
 - We meet as a group and in grade levels - Taylor meets with Biology once a month, Aaron with robotics once a month and I meet with accelerated once a month within the district.
- 



MATH

- Discussing and planning how to teach upcoming units. Looking at unit test results to see where students struggled and/or succeeded. Discussing how the unit went and taking notes on any changes we need to make for next year.
- We continue to use the four PLC questions to look at student data and placement for next year.

Our Successes:

- Used student data to drive after school instruction to achieve daily success, as well as future success on the SBA.
- We continue to grow as a math department and the stability in math the last few years has allowed for this. The lack of turn-over and teaching the same grade level and/or course has contributed to our continuity as a math department.



MOVING FORWARD

- It's time to revisit, re-engage, re-commit.
- Continue to find the best path to a shared responsibility for the success of all students.
- Increased use of technology.
- Moving to a solid stage 6 is the goal for 16-17.

The Seven Stages of Professional Learning Teams

Stages	Questions That Define This Stage	Description of This Stage	How to Move Forward
Stage 1 Filling the Time	What exactly are we supposed to do?	Teams in this stage believe in the PLC concepts but lack clear guidelines or experiences regarding what they need to focus on during collaboration time. Teams in this stage typically struggle to fill time or move to the other extreme and try to accomplish too many things too quickly. This stage is characterized by frustration, bewilderment, and a desire to go back to what was comfortable.	Teams in this stage need clear guidelines and work expectations. It also helps to identify clear and specific tasks for the group, utilize agendas, create norms, and collective commitments. Creating a PLC structure for the teams will be a crucial foundation for the teams.
Stage 2 Sharing Personal Practice	What is everyone doing in their classroom?	Teachers in this stage may be genuinely interested in what other teachers are doing, hoping to pick up new ideas. Talking about teaching feels like collaboration to the novice teacher but does not include the in-depth look at learning. Conversations about practice are comfortable at this stage but there is a danger in never really taking a step toward talking about student learning.	Teacher and school leaders can promote meaningful work by requiring team members to arrive at collaborative decisions around curriculum, assessment, or instruction. Need to move from individual milestones to collective milestones and goals. A discussion about shared accountability is warranted at this stage.
Stage 3 Planning Planning Planning	What should we be teaching and how do we lighten the load for each other?	Teachers utilize the team approach to plan together. Rather than each teacher individually planning every lesson, different members take responsibility for sets of lessons and share their planning work with others. Unfortunately, teams often grow comfortable with shared planning and fail to focus on results. Teacher attention remains centered on teaching rather than learning.	Use student achievement data in the planning process. The questions to ask are, "Are students learning what you want them to learn? How do you know they are learning?"
Stage 4 Developing Common Assessments	How do you know students learned? What does mastery look like?	Shared assessments force teachers to define exactly what students should learn and what evidence is necessary for documenting success. Novice teams may work to avoid common assessments, thereby steering clear of difficult conversations, but common assessments are essential if teams are to shift their focus from teaching to learning	Teacher and school leaders should consider moderating difficult conversations and modeling strategies for joint decision-making. Time spent on the differences between assessments <i>of</i> learning and <i>for</i> learning is critical. Skill development and P.D on assessment practices is critical at this stage.

Stage 5 Analyzing Student Learning	Are students learning what they are supposed to be learning?	Professional learning teams begin to shift their focus from teaching to learning. Teachers spend time looking and dissecting student work, analyzing the strengths and areas of improvement for each student. Teams can be very motivated in this stage and can be driven by results. However, teachers are also put in a delicate position of publicly facing results of their classroom which may pose an intensely personal response. Collective intelligence provides a never-ending source of solutions for addressing shared challenges.	Provide structures and tools for effective data analysis. Emotional support and patience is required during this stage. Create safe environments. Separate the person from the practice is an essential first step in teams examining results together. School leaders should walk the walk, modeling a data oriented approach while publically reflecting on their own work.
Stage 6 Adapting instruction to student needs	How can we adjust instruction to help those students struggling and those exceeding expectations?	Teachers, teacher leaders, and school leaders collectively commit to helping all students improve and learn. Behaviors in the teams represent this commitment. Teams are typically performing at high levels taking collective responsibility for student success rather than responding as individuals.	Pose reflective, provocative questions to the team to explore various approaches to intervention and enrichment. Provide professional development in intervention development.
Stage 7 Reflecting on Instruction	Which practices are most effective with our students?	This question brings the process of professional learning team development full circle, connecting learning back to teaching. Teams are engaged in deep reflection, tackling innovative projects such as action research and lesson study. In this stage, you will find teachers observing other classrooms, video taping instruction, intentionally inviting others into the group and “growing” the success of the team into a school culture.	Teacher and school leaders should facilitate a team’s ability to explore the teaching-learning connection. Teachers observing each other, providing release time for special projects, facilitating cross-team conversations, and expanding the culture school and district wide.

Adapted from the National Staff Development Council’s, Journal of Staff Development
“One Step at a Time” by Parry Graham and Bill Ferriter. Summer 2008, Vol. 29, NO 3, P. 38.

1. Certificated and Classified Personnel Report

Recommendation: That the board approve the attached report.

a. Joshua Melanson, West Auburn High School teacher, requests permission to travel to San Francisco, California, Monday to Wednesday, June 20-22. The purpose of the trip is to attend the Economics for Financial Educators training. Lodging will be at a hotel to be determined, meals will be at local restaurants, and travel will be by airplane. All expenses will be paid by personal funds. No substitute will be needed.

b. Tami Petrina, executive director of student special services; Sarah Mattison, Lakeland Hills Elementary School teacher; Stephanie Jensen, Dick Scobee Elementary School teacher; Diana Musial, Evergreen Heights Elementary School teacher; and Cynthia Blau, Ilalko Elementary School teacher, request permission to travel to Las Vegas, Nevada, Sunday to Tuesday, July 17-19. The purpose of the trip is to attend the I Teach Kindergarten Conference. Lodging will be at the Venetian Hotel, meals will be at local restaurants, and travel will be by airplane. All expenses will be paid by district funds. No substitutes will be needed.

c. Thomas McDermott, assistant director of college and career readiness, and Kady Vanderhoof, Auburn Mountainview High School teacher, request permission to travel to Chicago, Illinois, Sunday to Friday, July 31 - August 5. The purpose of the trip is to attend the AP Capstone Professional Development conference. Lodging will be at the Chicago-Lakeshore Hotel, meals will be at local restaurants, and travel will be by airplane. All expenses will be paid by district funds. No substitutes will be needed.

d. Vicki Alonzo, director of public information and grants, requests permission to travel to Chicago, Illinois, Friday to Wednesday, July 15-20. The purpose of the trip would be to attend the National School Public Relations Seminar. Lodging will be at the Holiday Inn Express, meals will be at local restaurants, and travel will be by airplane. All expenses will be paid with district and scholarship funds. No substitute is needed.

- e. Andrew Munsen, Auburn Riverside High School teacher, requests permission to travel to Salt Lake City, Utah, Thursday to Friday, June 2-10. The purpose of the trip is to participate in the AP US Government Reading. Lodging will be at the Red Lion hotel, meals will be at local restaurants, and travel will be by airplane. All travel expenses will be paid by Educational Testing Services. A substitute will be needed for seven days, with sub expenses being paid by DSL curriculum.

Recommendation:

That the above trips be approved as requested.

PERSONNEL REPORT - CERTIFICATED

Classification	Job Type	Building	Name	Start Date	Hours	Rate of Pay	Comment
Curriculum-Noncurriculum	CERTIFICATED 9TH GRADE ACADEMY	WEST AUBURN	BOWMAN, MARK	4/1/2016	2	\$43.68	
	CERTIFICATED 9TH GRADE ACADEMY	WEST AUBURN	CRATER, LAUREN	4/1/2016	2	\$30.51	
	CERTIFICATED 9TH GRADE ACADEMY	WEST AUBURN	HOLLOMAN, LEONARD	3/24/2016	6	\$67.00	
	CERTIFICATED 9TH GRADE ACADEMY	WEST AUBURN	JOHNSON, ANNA	3/24/2016	6	\$34.47	
	CERTIFICATED 9TH GRADE ACADEMY	WEST AUBURN	KEBBA, NOREEN	4/1/2016	2	\$47.16	
	CERTIFICATED 9TH GRADE ACADEMY	WEST AUBURN	LUDWIGSON, DEREK	3/24/2016	6	\$29.29	
	CERTIFICATED 9TH GRADE ACADEMY	WEST AUBURN	MELANSON, JOSHUA	4/1/2016	2	\$33.37	
	CERTIFICATED 9TH GRADE ACADEMY	WEST AUBURN	WATSON, KENNETH	4/1/2016	2	\$50.13	
	CERTIFICATED 9TH GRADE ACADEMY	WEST AUBURN	WILSON, DON	4/1/2016	2	\$52.46	
	CERTIFICATED AFTER SCHOOL CLASS	AUBURN RIVERSIDE	MOBERG, JUIE	4/29/2016	60	\$52.46	
	CERTIFICATED AP TESTING SUPPORT	DSL	TATE, CRYSTAL	4/22/2016	7	\$19.43	
	CERTIFICATED CAMP AUBURN	DICK SCOBEE	BAEHR, AMANDA	4/26/2016		STIPEND \$421	
	CERTIFICATED CAMP AUBURN	TERMINAL PARK	HANSON, MARLENE	5/3/2016		STIPEND \$421	
	CERTIFICATED CAMP AUBURN	PIONEER	MASSIMINO JR., JOSEPH	5/3/2016		STIPEND \$421	
	CERTIFICATED CAMP AUBURN	TERMINAL PARK	MCINTYRE, LEAH	5/3/2016		STIPEND \$421	
	CERTIFICATED CAMP AUBURN	DICK SCOBEE	RINGLER, LEANN	4/26/2016		STIPEND \$421	
	CERTIFICATED CAMP AUBURN	TERMINAL PARK	UFFALUSSY LAFAYETTE, LESLIE	5/3/2016		STIPEND \$421	
	CERTIFICATED FAFSA COMPLETION SUPP	WEST AUBURN	BOSCH, MICHAEL	5/2/2016	8	\$31.85	
	CERTIFICATED FAFSA COMPLETION SUPP	WEST AUBURN	LUDWIGSON, DEREK	5/2/2016	8	\$29.29	
	CERTIFICATED HELP STUDENTS MEET STANDARDS	AUBURN HIGH	COOKE, JENNIFER	4/29/2016	22	\$34.81	
	CERTIFICATED HELP STUDENTS MEET STANDARDS	AUBURN HIGH	MCLAUGHLIN, SCOTT	4/29/2016	5	\$47.16	
	CERTIFICATED HELP STUDENTS MEET STANDARDS	AUBURN HIGH	MILAT, MARK	4/29/2016	20	\$45.80	
	CERTIFICATED HELP STUDENTS MEET STANDARDS	AUBURN HIGH	SEIDL, DYANN	4/29/2016	20	\$52.46	
	CERTIFICATED INDEPENDENT STUDY	AUBURN MOUNTAINVIEW	AMMONS, TORI	2/1/2016	16	\$40.97	
	CERTIFICATED K-5 REPORT CARD COMM	ILAKO	BLAU, CYNTHIA	4/5/2016	6	\$42.51	
	CERTIFICATED K-5 REPORT CARD COMM	HAZELWOOD	CRAIN, LORI	4/5/2016	6	\$44.46	
	CERTIFICATED K-5 REPORT CARD COMM	LEA HILL	DANIELS, TREENA	4/5/2016	6	\$52.46	
	CERTIFICATED K-5 REPORT CARD COMM	EVERGREEN HTS	ERICKSON, STACI	4/5/2016	6	\$50.23	
	CERTIFICATED K-5 REPORT CARD COMM	TERMINAL PARK	IAMS, MARISSA	4/5/2016	6	\$36.03	
	CERTIFICATED K-5 REPORT CARD COMM	LAKELAND HILLS	KNAPP, STEPHANIE	4/5/2016	6	\$44.46	
	CERTIFICATED K-5 REPORT CARD COMM	DICK SCOBEE	LYSENE, SARAH	4/5/2016	6	\$29.29	
	CERTIFICATED K-5 REPORT CARD COMM	LAKELAND HILLS	MATTISON, SARAH	4/5/2016	6	\$41.88	
	CERTIFICATED K-5 REPORT CARD COMM	ALPAC	MILES, ADRIENNE	4/5/2016	6	\$39.67	
	CERTIFICATED K-5 REPORT CARD COMM	ILAKO	MOORE, ERIKA	4/5/2016	6	\$44.46	
	CERTIFICATED K-5 REPORT CARD COMM	GILDO REY	PAGORIA-O'NEILL, ANNMARIE	4/5/2016	6	\$38.87	
	CERTIFICATED K-5 REPORT CARD COMM	LEA HILL	RAY, ELIZABETH	4/5/2016	6	\$33.48	
	CERTIFICATED K-5 REPORT CARD COMM	LAKELAND HILLS	SCHUMAN, SUSAN	4/5/2016	6	\$52.46	
	CERTIFICATED K-5 REPORT CARD COMM	WASHINGTON	SMITH, TORI	4/5/2016	6	\$44.46	
	CERTIFICATED K-5 REPORT CARD COMM	TERMINAL PARK	SWEENEY, DEVAN	4/5/2016	6	\$48.64	
	CERTIFICATED K-5 REPORT CARD COMM	ARTHUR JACOBSEN	SWENSrud, STACY	4/5/2016	6	\$45.80	
	CERTIFICATED K-5 REPORT CARD COMM	ARTHUR JACOBSEN	TAYLOR, TIFFANY	4/5/2016	6	\$34.47	
	CERTIFICATED K-5 REPORT CARD COMM	LAKE VIEW	TOMPKINS, DEANNA	4/5/2016	6	\$52.46	
	CERTIFICATED LANG ARTS STATE ASSMT	AUBURN MOUNTAINVIEW	STENSON, KIMBERLY	10/12/2015	20.5	\$28.93	
	CERTIFICATED LIBRARY CLEAN UP	WASHINGTON	HARMS, MICHELLE	4/11/2016	2.75	\$29.30	
	CERTIFICATED LIBRARY CLEAN UP	WASHINGTON	KILBURG, KRISTY	4/11/2016	7	\$45.80	
	CERTIFICATED LIBRARY PROJECT	PIONEER	HOSKIN, DAVID	1/1/2016	8.5	\$47.16	
	CERTIFICATED PSAT 8/9 PARENT NIGHT	MT. BAKER	UTU, JACQUELIN	4/29/2016	4	\$34.47	
	CERTIFICATED SCORING SUMMARY WRITINGS	AUBURN MOUNTAINVIEW	BAUMSTARK, PATRIA	3/15/2016	1.5	\$52.46	
	CERTIFICATED SCORING SUMMARY WRITINGS	AUBURN MOUNTAINVIEW	CHU, JANET	3/15/2016	4.2	\$50.23	
	CERTIFICATED SCORING SUMMARY WRITINGS	AUBURN MOUNTAINVIEW	COMSTOCK, BRADLEY	3/15/2016	1.5	\$30.10	
	CERTIFICATED SCORING SUMMARY WRITINGS	AUBURN MOUNTAINVIEW	GRUBB, REGINA	3/15/2016	3.6	\$36.69	
	CERTIFICATED SCORING SUMMARY WRITINGS	AUBURN MOUNTAINVIEW	HAMMER, ROBIN	3/15/2016	0.6	\$52.46	
	CERTIFICATED SCORING SUMMARY WRITINGS	AUBURN MOUNTAINVIEW	LEMANSKI, NATHAN	3/15/2016	3	\$37.21	
	CERTIFICATED SCORING SUMMARY WRITINGS	AUBURN MOUNTAINVIEW	OSBORNE, NORENE	3/15/2016	0.6	\$38.62	
	CERTIFICATED SCORING SUMMARY WRITINGS	AUBURN MOUNTAINVIEW	SMITH, KAMARIA	3/15/2016	4.5	\$38.26	
	CERTIFICATED SCORING SUMMARY WRITINGS	AUBURN MOUNTAINVIEW	STEFFIN, KARL	3/15/2016	1.5	\$49.25	
	CERTIFICATED SCORING SUMMARY WRITINGS	AUBURN MOUNTAINVIEW	THOMPSON, ALICIA	3/15/2016	1.8	\$36.03	
	CERTIFICATED SIP PRESENTATION	RAINIER	BRENNAN, TRACY	3/14/2016	3	\$41.88	
	CERTIFICATED SIP PRESENTATION	RAINIER	DIEBAG, JAMES	3/14/2016	3	\$38.65	
	CERTIFICATED TITLE 1 COORD ADM	AUBURN MOUNTAINVIEW	O'BRIEN, LEAHMARIE	9/1/2015	150	\$48.64	
	CERTIFICATED TITLE PROF DEV	OLYMPIC	LENIHAN, LAINE	3/21/2016	2	\$52.46	
	CERTIFICATED TPEP EVALS	AUBURN RIVERSIDE	HALFORD, DAVID	5/1/2016	10	\$71.25	
	CERTIFICATED TPEP EVALS	AUBURN RIVERSIDE	WILSON, NOLA	5/1/2016	10	\$62.63	

Leave

New Hire

CERTIFICATED	DEAN OF STUDENTS	OLYMPIC	POGSON, DAVID	9/7/2016
CERTIFICATED	TEACHER/CTE	AUBURN MOUNTAINVIEW	STEPHANSON, KATHRYN	9/7/2016
CERTIFICATED	TEACHER/CTE	RAINIER	SULLIVAN, MARCUS	9/7/2016
CERTIFICATED	TEACHER/ELEM TBD	TBD	FABYANCHUK, YEKATERINA	9/7/2016
CERTIFICATED	TEACHER/ELEM TBD	TBD	OTERO, RUEBEN	9/7/2016
CERTIFICATED	TEACHER/ELEM TBD	PIONEER	SZYMANSKI, ARLENE	9/7/2016
CERTIFICATED	TEACHER/ELEM TBD	TBD	WELSH, SHAWN	9/7/2016
CERTIFICATED	TEACHER/FIFTH	TERMINAL PARK	GARMAN, JESSICA	9/7/2016
CERTIFICATED	TEACHER/FIRST	DICK SCOBEE	BEERS, SARAH	9/7/2016
CERTIFICATED	TEACHER/FIRST	WASHINGTON	PASBRIG, CAMERON	9/7/2016
CERTIFICATED	TEACHER/FIRST-SECOND	ALPAC	MODEN, JESSICA	9/7/2016
CERTIFICATED	TEACHER/FOURTH	WASHINGTON	BIRGE, AMBER	9/7/2016
CERTIFICATED	TEACHER/LANG. ARTS	CASCADE	ALLEN, ANDREW	9/7/2016
CERTIFICATED	TEACHER/LANG. ARTS	OLYMPIC	LEMKE, MARTINA	9/7/2016
CERTIFICATED	TEACHER/P.E.	GILDO REY	WEAVER, RORY	9/7/2016
CERTIFICATED	TEACHER/SCIENCE	RAINIER	SOWARDS, JESSALYN	9/7/2016
CERTIFICATED	TEACHER/SECOND	LAKE VIEW	EGBERT, BRITTANY	9/7/2016
CERTIFICATED	TEACHER/SECOND	DICK SCOBEE	KING, STEFANIE	9/7/2016
CERTIFICATED	TEACHER/SOC STUDIES	AUBURN MOUNTAINVIEW	WOOD, RICHARD	9/7/2016
CERTIFICATED	TEACHER/SPEC ED	TBD	EASLEY, JOSHUA	9/7/2016
CERTIFICATED	TEACHER/SPEC ED	RAINIER	MACFARLAND, FRANCISCO	9/7/2016

CERTIFICATED TEACHER/SPEC ED	CASCADE	MATZ, MORGAN	9/7/2016
CERTIFICATED TEACHER/SPEC ED	OLYMPIC	MAY, LAEL	9/7/2016
CERTIFICATED TEACHER/SPEC ED	AUBURN MOUNTAINVIEW	MERILO, KATHERINE	9/7/2016
CERTIFICATED TEACHER/SPEC ED	MT. BAKER/OLYMPIC	RAMIREZ-DILLARD, REBECCA	9/7/2016
CERTIFICATED TEACHER/SPEC ED	AUBURN HIGH	RAWIE, DARREN	9/7/2016
CERTIFICATED TEACHER/SPEC ED	AUBURN HIGH	SCHLOEMER, DEBORAH	9/7/2016
CERTIFICATED TEACHER/SPEC ED	TBD	SUTHERLAND, ERIN	9/7/2016
CERTIFICATED TEACHER/SPEC ED	LEA HILL	WALL, CANDACE	9/7/2016
CERTIFICATED TEACHER/THIRD	WASHINGTON	DAVIS, AARON	9/7/2016
CERTIFICATED TEACHER/THIRD	WASHINGTON	FINAFROCK, KELSEY	9/7/2016
CERTIFICATED TEACHER/THIRD	LEA HILL	LANKTREE, SARAH	9/7/2016
CERTIFICATED TEACHERTHIRD	CHINOOK	MONTIEL, MAGDELINA	9/7/2016

Resignation

CERTIFICATED TEACHER/KIND. SPEC.	GILDO REY	SIMONS, DIANE	6/23/2016	PERSONAL
----------------------------------	-----------	---------------	-----------	----------

PERSONNEL REPORT - CLASSIFIED

Curriculum-Noncurriculum

CLASSIFIED	ACCOMPANIST - CHOIR	AUBURN RIVERSIDE	CARMAN, BARBARA	12/1/2015	34	\$15.00
CLASSIFIED	ACCOMPANIST - CHOIR	AUBURN RIVERSIDE	FULKERSON, DARCY	12/1/2015	34	\$15.00
CLASSIFIED	ACCOMPANIST - DRAMA	AUBURN HIGH	HUO, JASON	10/2/2015	106	\$15.00
CLASSIFIED	CONSULTANT - CHOIR	OLYMPIC	DODD, JANINE	1/1/2016	60	\$20.00
CLASSIFIED	EXTRA HOURS - AP TESTING	DEPT OF STUDENT LRNG	IRWIN, DANIEL	5/2/2016	15	\$20.00
CLASSIFIED	EXTRA HOURS - MATH COMPETITION	DEPT OF STUDENT LRNG	LEE, SUSAN	4/28/2016	8	\$18.03
CLASSIFIED	EXTRA HOURS - MATH NIGHT	OLYMPIC	DAUMIT, ELISABETH	4/1/2016	3	\$18.85
CLASSIFIED	EXTRA HOURS - MATH NIGHT	OLYMPIC	HUNTER, PILAR	4/1/2016	3	\$18.18
CLASSIFIED	EXTRA HOURS - RIGHT RESPONSE TRAINING	AUBURN HIGH	AHLUWALIA, TEIHA	4/21/2016 NTE 14 HRS.		\$17.84
CLASSIFIED	EXTRA HOURS - RIGHT RESPONSE TRAINING	CASCADE	BAEZ ZAMORA, EDNA	4/21/2016 NTE 14 HRS.		\$17.51
CLASSIFIED	EXTRA HOURS - RIGHT RESPONSE TRAINING	AUBURN HIGH	BLAKELY, ARCHIE	4/21/2016 NTE 14 HRS.		\$18.19
CLASSIFIED	EXTRA HOURS - RIGHT RESPONSE TRAINING	AUBURN HIGH	CAMPBELL, KELLI	4/21/2016 NTE 14 HRS.		\$18.03
CLASSIFIED	EXTRA HOURS - RIGHT RESPONSE TRAINING	OLYMPIC	FOUTCH, PATTI D	4/21/2016 NTE 14 HRS.		\$18.19
CLASSIFIED	EXTRA HOURS - RIGHT RESPONSE TRAINING	CHINOOK	FREELUND, VICKI	4/21/2016 NTE 14 HRS.		\$18.19
CLASSIFIED	EXTRA HOURS - RIGHT RESPONSE TRAINING	ALPAC	JOHNSON, DEANN	4/21/2016 NTE 14 HRS.		\$17.84
CLASSIFIED	EXTRA HOURS - RIGHT RESPONSE TRAINING	TERMINAL PARK	JUERGENSEN, MINDY	4/21/2016 NTE 14 HRS.		\$17.51
CLASSIFIED	EXTRA HOURS - RIGHT RESPONSE TRAINING	CHINOOK	MASON, MACKENZIE	4/21/2016 NTE 14 HRS.		\$17.51
CLASSIFIED	EXTRA HOURS - RIGHT RESPONSE TRAINING	AUBURN HIGH	MATTHEWS III, ROBERT	4/21/2016 NTE 14 HRS.		\$17.84
CLASSIFIED	EXTRA HOURS - RIGHT RESPONSE TRAINING	AUBURN HIGH	MCGRATH, ANGELA	4/21/2016 NTE 14 HRS.		\$18.19
CLASSIFIED	EXTRA HOURS - RIGHT RESPONSE TRAINING	AUBURN RIVERSIDE	MILLER, ELIZABETH	4/21/2016 NTE 14 HRS.		\$17.51
CLASSIFIED	EXTRA HOURS - RIGHT RESPONSE TRAINING	CASCADE	OLES, CARRIE	4/21/2016 NTE 14 HRS.		\$17.84
CLASSIFIED	EXTRA HOURS - RIGHT RESPONSE TRAINING	AUBURN HIGH	PATTERSON, DEANNA	4/21/2016 NTE 14 HRS.		\$17.84
CLASSIFIED	EXTRA HOURS - RIGHT RESPONSE TRAINING	AUBURN HIGH	RABAN, ROBERT J	4/21/2016 NTE 14 HRS.		\$18.03
CLASSIFIED	EXTRA HOURS - RIGHT RESPONSE TRAINING	AUBURN RIVERSIDE	REIFERT, VICKI	4/21/2016 NTE 14 HRS.		\$18.19
CLASSIFIED	EXTRA HOURS - RIGHT RESPONSE TRAINING	AUBURN HIGH	SMITH, SHELLEY ANN	4/21/2016 NTE 14 HRS.		\$17.51
CLASSIFIED	EXTRA HOURS - RIGHT RESPONSE TRAINING	AUBURN HIGH	THOMPSON, MELANIE	4/21/2016 NTE 14 HRS.		\$17.51
CLASSIFIED	INSTRUCTIONAL HOURS - EOC PROCTOR	AUBURN HIGH	IRWIN, DANIEL	1/4/2016	9.5	\$20.00
CLASSIFIED	INSTRUCTIONAL HOURS - STUDENT SUPPORT	LAKE VIEW	SPRINGER, SARA	4/26/2016	12	\$17.51
CLASSIFIED	INTERPRETER	DEPT OF STUDENT LRNG	KEJU, THOMPSON	5/13/2016	150	\$17.65
CLASSIFIED	INTERPRETER	DEPT OF STUDENT LRNG	LERMA, REBECCA	5/13/2016	200	\$17.65

New Hire

CLASSIFIED	LIFEGUARD/INSTRUCTOR	POOL	BAXTER, JILLIAN	5/2/2016		\$9.55 QUALIFIED APPLICANT
CLASSIFIED	P-SPEC ED CLASS SIZE	ANNEX	MASON, MALIA	4/20/2016	3	\$17.51 QUALIFIED APPLICANT

Rehire

Resignation

CLASSIFIED	ASSISTANT COACH - BASEBALL	AUBURN HIGH	THOMPSON, ANTHONY	8/29/2014		NON-CONTINUING
CLASSIFIED	ASSISTANT COACH - DANCE	AUBURN HIGH	BARETICH, MIRIAM	2/28/2013		NON-CONTINUING
CLASSIFIED	ASSISTANT COACH - FOOTBALL	AUBURN HIGH	COOK, STEPHEN	12/19/2012		NON-CONTINUING
CLASSIFIED	ASSISTANT COACH - FOOTBALL	AUBURN HIGH	LABRANCHE, PAUL	11/13/2013		NON-CONTINUING
CLASSIFIED	ASSISTANT COACH - FOOTBALL	AUBURN HIGH	MARLENEE, CODY	12/19/2012		NON-CONTINUING
CLASSIFIED	ASSISTANT COACH - GYMNASTICS	AUBURN HIGH	HAINER, AMANDA	3/31/2014		NON-CONTINUING
CLASSIFIED	ASSISTANT COACH - GYMNASTICS	AUBURN HIGH	JOHNSON, HAILEY	3/31/2014		NON-CONTINUING
CLASSIFIED	ASSISTANT COACH - GYMNASTICS	AUBURN HIGH	JORDAN, SHAWNA	4/30/2013		NON-CONTINUING
CLASSIFIED	ASSISTANT COACH - SOCCER (GIRLS)	AUBURN HIGH	BEARD, MONICA	8/26/2013		NON-CONTINUING
CLASSIFIED	ASSISTANT COACH - SOCCER (GIRLS)	AUBURN HIGH	HURLBUT, KARLY	12/19/2012		NON-CONTINUING
CLASSIFIED	ASSISTANT COACH - VOLLEYBALL	AUBURN HIGH	BLANTON, CHRISTIN	11/26/2014		NON-CONTINUING
CLASSIFIED	ASSISTANT COACH - VOLLEYBALL	AUBURN HIGH	HALAHUNI, LILIOLA	11/30/2013		NON-CONTINUING
CLASSIFIED	ASSISTANT COACH - VOLLEYBALL	MT.VIEW SR HI	RUSSO, NICOLE	11/13/2015		PERSONAL
CLASSIFIED	C-CUSTODIAN B 183	MT.VIEW SR HI	MIRGORODSKAYA, VALENTINA	6/24/2016		RETIREMENT
CLASSIFIED	EXEC DIR - APSF	ADMINISTRATION	HAYS, CHRISTINE	5/31/2016		PERSONAL
CLASSIFIED	K-KITCHEN MANAGER MS	CASCADE	NIELSEN-HOMAN, JANET	6/24/2016		RETIREMENT
CLASSIFIED	P-CAREER CENTER	MT.VIEW SR HIGH	MIKESH, VICKY	6/24/2016		RETIREMENT
CLASSIFIED	P-PARA POOL	ADMINISTRATION	DOYLE, ANGELINA	5/9/2016		TERMINATION - UNAVAILABLE
CLASSIFIED	P-PARA POOL	ADMINISTRATION	HARRIS, KELLIE	5/9/2016		TERMINATION - UNAVAILABLE
CLASSIFIED	P-PARA POOL	ADMINISTRATION	HOERTH, BARBARA	5/9/2016		TERMINATION - UNAVAILABLE
CLASSIFIED	P-PARA POOL	ADMINISTRATION	JOHNSTON, ROXANNE	5/5/2016		PERSONAL
CLASSIFIED	P-READING/MATH	GILDO REY	BHAMRA, RAMAN	5/9/2016		PERSONAL
CLASSIFIED	SUPERVISION	AUBURN HIGH	HENRY, WALTER	1/24/2014		NON-CONTINUING
CLASSIFIED	SUPERVISION	AUBURN HIGH	MCCUSKEY, WILLIAM	12/20/2013		NON-CONTINUING
CLASSIFIED	SUPERVISION	AUBURN HIGH	RICHEY, DONNA	11/30/2013		NON-CONTINUING

Student

Supervision

CLASSIFIED	OPEN HOUSE	AUBURN HIGH	NAKAYA, CINDY	9/1/2015	3.5	\$20.00
CLASSIFIED	SUPERVISION	POOL	HARRIS, TERRENCE	5/2/2016		\$20.00 QUALIFIED APPLICANT

CERTIFICATED RESUMES

Andrew Allen-language arts-Cascade Middle School. Mr. Allen earned his bachelor and master degrees at Pacific Lutheran University. Andrew completed his student teaching at Cascade Middle School.

Sarah Beers-first grade-Dick Scobee Elementary. Ms. Beers earned her bachelor degree at the University of Washington. Sarah completed her student teaching at Evergreen Heights Elementary.

Amber Birge-fourth grade-Washington Elementary. Ms. Birge earned her bachelor degree at Washington State University. Amber previously worked for the Highline School District.

Aaron Davis-third grade-Alpac Elementary. Mr. Davis earned his bachelor degree at Washington State University. Aaron completed his student teaching at Lakeland Hills Elementary.

Joshua Easley-special education-location TBD. Mr. Easley earned his bachelor and master degrees at the University of Northern Texas. Joshua completed his student teaching in Texas.

Brittany Egbert-second grade-Lake View Elementary. Ms. Egbert earned her bachelor degree at Western Washington University and her master degree at City University. Brittany previously worked for the Snoqualmie School District. She is an Auburn High School graduate.

Yekaterina Fabyanchuk-elementary grade TBD-location TBD. Ms. Fabyanchuk earned her bachelor degree at Central Washington University. Yekaterina completed her student teaching in Puyallup.

Kelsey Finafrock-third grade-Washington Elementary. Ms. Finafrock earned her bachelor degree at Central Washington University. Kelsey completed her student teaching in Ellensburg.

Jessica Garman-fifth grade-Terminal Park Elementary. Ms. Garman earned her bachelor degree at Washington State University. Jessica previously worked for the Federal Way School District.

Stefanie King-second grade-Dick Scobee Elementary. Ms. King earned her bachelor and master degrees at Central Washington University. Stefanie previously worked for the Gig Harbor Academy.

Sarah Lanktree-third grade-Lea Hill Elementary. Ms. Lanktree earned her bachelor degree at Central Washington University and her master degree at Walden University. Sarah previously worked for the Federal Way School District.

Martina Lemke-language arts-Olympic Middle School. Ms. Lemke earned her bachelor degree at Georgia Institute of Technology. Martina completed her student teaching at Olympic Middle School.

Francisco MacFarland-special education-Rainier Middle School. Mr. MacFarland earned his bachelor degree at the University of Montana. Francisco completed his student teaching in Montana.

Morgan Matz-special education-Casade Middle School. Ms. Matz earned her bachelor degree at Central Washington University. Morgan previously worked for the Federal Way School District.

Lael May-special education-Olympic Middle School. Ms. May earned her bachelor degree at Brigham Young University and her master degree at Grand Canyon University. Lael completed her student teaching at Lake View Elementary and she was a para-educator in the Auburn School District. She is also an Auburn High School graduate.

Katherine Merilo-special education-Auburn Mountainview High School. Ms. Merilo earned her bachelor degree at Randolph College and her master degree at Portland State University. Katherine completed her student teaching in Portland, Oregon.

Jessica Moden-first/second grade-Alpac Elementary. Ms. Moden earned her bachelor degree at Washington State University. Jessica completed her student teaching at Lakeland Hills Elementary.

Magdelina Montiel-third grade-Chinook Elementary. Ms. Montiel earned her bachelor and master degrees at the University of Washington. Magdelina previously worked for the Puyallup School District.

Rueben Otero-elementary grade TBD-location TBD. Mr. Otero earned his bachelor degree at Washington State University and his master degree at Whitworth College. Rueben previously taught in Germany.

Cameron Pasbrig-first grade-Washington Elementary. Ms. Pasbrig earned her bachelor degrees at Arizona State University and Central Washington University. Cameron previously worked for the Kent School District.

David Pogson-dean of students-Olympic Middle School. Mr. Pogson earned his bachelor degree at Ashford University and his master degree American College. David previously worked for the Kent School District.

Rebecca Ramirez-Dillard-special education-Mt. Baker-Olympic Middle Schools. Ms. Ramirez-Dillard earned her bachelor degree at Portland State University and her master degree at Grand Canyon University. Rebecca previously taught in California.

Darren Rawie-special education-Auburn High School. Mr. Rawie earned his bachelor degree at the University of Washington. Darren previously worked for the Highline School District.

Deborah Schloemer-special education-Auburn High School. Ms. Schloemer earned her bachelor and master degrees from Seattle Pacific University. Deborah completed her student teaching at Auburn High School.

Jesslyn Sowards-science-Rainier Middle School. Ms. Sowards earned her bachelor degree at the University of Washington. Jesslyn completed her student teaching in the Tacoma School District. She is an Auburn High School graduate.

Kathryn Stephenson-CTE-Auburn Mountainview High School. Ms. Stephenson earned her bachelor degree at Washington State University. Kathryn completed her student teaching at Auburn Mountainview High School.

Marcus Sullivan-STEM-Robotics-Rainier Middle School. Mr. Sullivan is coming from the industry field. Marcus previously worked for the United States Army.

Erin Sutherland-special education-location TBD. Ms. Sutherland earned her bachelor degree at Western Washington University. Erin completed her student teaching in the Shoreline School District.

Arlene Szymanski-elementary grade TBD-Pioneer Elementary. Ms. Szymanski earned her bachelor degree at De La Salle University in the Philippines. Arlene was previously a para-educator in the Auburn School District.

Candace Wall-special education-Lea Hill Elementary. Ms. Wall earned her bachelor degree at the State University of New York and her master degree at Buffalo State College. Candace previously taught in New York.

Rory Weaver-P.E.-Gildo Rey Elementary. Mr. Weaver earned his bachelor degree at Central Washington University. Rory previously worked for the Highline School District. He is an Auburn Riverside High School graduate.

Shawn Welsh-elementary grade TBD-location TBD. Mr. Welsh earned his bachelor degree at Central Washington University and his master degree at City University. Shawn previously worked for the Kent School District.

Richard Wood-social studies-Auburn Mountainview High School. Mr. Wood earned his bachelor degree at Central Washington University and his master degree at the University of Phoenix. Richard completed his student teaching at Auburn Mountainview High School.

BUILDING PROGRAM

1. Auburn Riverside High School Ballfield and Site Improvements Project

Attached is a copy of Change Order No. 7 for the Auburn Riverside High School Ballfield and Site Improvements project which should be considered to permit a change in the construction contract amount.

Original Contract	\$3,609,000.00
Previously Approved	283,625.01
Change Order No. 7	+\$ 3,642.79
New Contract Amount	<u>\$3,896,267.80</u>

Jeffrey Grose, executive director of capital projects, will be present to recommend acceptance of this change order.

Recommendation:	That Change Order No. 7 be accepted for the Auburn Riverside High School Ballfield and Site Improvements project and the contract amount be increased by \$3,642.79 for a new contract amount of \$3,896,267.80.
-----------------	--

2. Auburn High School Modernization and Reconstruction Project

Attached are copies of Change Order Nos. 95 and 96 for the Auburn High School Modernization & Reconstruction project which should be considered to permit a change in the construction contract amount.

Original Contract	\$80,570,700.00
Previously Approved	5,921,615.00
Change Order No. 95	79,591.00
Change Order No. 96	+\$ 30,321.00
New Contract Amount	<u>\$86,602,227.00</u>

Jeffrey Grose will be present to recommend acceptance of the change order.

Recommendation:	That Change Order Nos. 95 and 96 be accepted for the Auburn High School Modernization and Reconstruction project and the contract amount be increased by \$109,912.00 for a new contract amount of \$86,602,227.00.
-----------------	---

3. Auburn High School-Work in Progress Report

Jeffrey Grose will be present to report on the progress of the Auburn High School Modernization & Reconstruction project.

Change Order

PROJECT: AUBURN RIVERSIDE HIGH SCHOOL
BALLFIELD AND SITE IMPROVEMENTS
501 Oravetz Road, Auburn, WA 98092

CHANGE ORDER NO.: 07

DATE: May 13, 2016

TO CONTRACTOR: Terra Dynamics, Inc.
P.O. Box 2479
Auburn, WA 98071

CONTRACT DATED: March 26, 2015

ARCHITECT'S PROJECT NO.: 121-13024

The Contract is changed as follows:

1. PR-025: Add modification of 3 discus pads to eliminate crown Add \$ 3,642.79

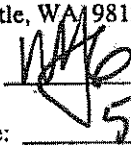
The original Contract Sum was	\$ 3,609,000.00
Net change by previously authorized Change Orders	\$ 283,625.01
The Contract Sum prior to this Change Order was	\$ 3,892,625.01
The Contract Sum will be increased / decreased / remain unchanged by this change order	\$ 3,642.79
The new Contract Sum including this Change Order will be	\$ 3,896,267.80

The Contract Time will be increased / decreased / **remain unchanged** by 0 days
The date of Substantial Completion as of the date of this Change Order therefore is: October 2, 2015

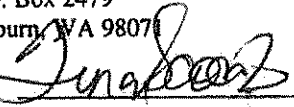
NAC|Architecture
2025 First Avenue, Suite 300
Seattle, WA 98121

Auburn School District #408
915 Fourth Street NE
Auburn, WA 98002

Terra Dynamics, Inc.
P.O. Box 2479
Auburn, WA 98071

By: 
Date: 5/16/16

By: _____
Date: _____

By: 
Date: 5-13-16

Change Order

PROJECT:	AUBURN HIGH SCHOOL MODERNIZATIONS & RECONSTRUCTION 800 Fourth Street NE, Auburn, WA 98002	CHANGE ORDER NO.:	95
		DATE:	May 16, 2016
TO CONTRACTOR:	Lydig Construction Company 3180 139 th Ave SE, Suite 110 Bellevue, WA 98005	CONTRACT DATED:	February 18, 2013
		ARCHITECT'S PROJECT NO.:	121-10016

The Contract is changed as follows:

1. CCA-474	Provide sidewalk demolition and hydrant removal at north side of 4 th Street NE.	\$10,430.00
2. CCA-478	Provide sidewalk ramps at north parking lot.	\$6,613.00
3. CCA-485R	Modify roof drain and sidewalk elevations at north side of Auto Shop.	\$748.00
4. CCA-501R	Modify existing asphalt, sidewalk and street lights at north side of 4 th Street NE.	\$25,622.00
5. CCA-523	Cut and cap gas lines and remove gas meters at temporary parking lot.	\$2,190.00
6. CCA-539	Modify curbs, sidewalks and parking lot at east side of pool at north parking lot.	\$13,416.00
7. CCA-569	Modify roof drain line at west side of Auto Shop.	\$627.00
8. CCA-581	Modify tennis court elevations.	<u>\$19,945.00</u>
	Total This Change Order	\$79,591.00

The original Contract Sum was	\$	80,570,700.00
Net change by previously authorized Change Orders	\$	5,921,615.00
The Contract Sum prior to this Change Order was	\$	86,492,315.00
The Contract Sum will be increased by this change order	\$	79,591.00
The new Contract Sum including this Change Order will be	\$	86,571,906.00

The Contract Time will be unchanged by 0 days
The date of Substantial Completion as of the date of this Change Order therefore is: July 1, 2016

Pursuant to the Contract, the execution of this Change Order constitutes a waiver of claims by the Contractor arising out of the Work to be performed or deleted pursuant to this Change Order, except as specifically described herein. Reservation of rights will be deemed waived and are void unless the reserved rights are specifically described in detail to the satisfaction of the Owner and are initialed by the Owner.

NAC Architecture
2025 First Avenue, Suite 300
Seattle, WA 98121


Auburn School District #408
915 Fourth Street NE
Auburn, WA 98002

Lydig Construction Company
3180 139th Ave SE, Suite 110
Bellevue, WA 98005



By: _____
Brent Compton
Date: May 16, 2016

By: _____
Cindi Blansfield
Date: _____


By: _____
Brandon Watts
Date: 5-18-16

Change Order

PROJECT:	AUBURN HIGH SCHOOL MODERNIZATIONS & RECONSTRUCTION 800 Fourth Street NE, Auburn, WA 98002	CHANGE ORDER NO.:	96
TO CONTRACTOR:	Lydig Construction Company 3180 139 th Ave SE, Suite 110 Bellevue, WA 98005	DATE:	May 16, 2016
		CONTRACT DATED:	February 18, 2013
		ARCHITECT'S PROJECT NO.:	121-10016

The Contract is changed as follows:

1. CCA-482	Modify wall finishes in Corridor 064B in PAC.	\$3,354.00
2. CCA-550	Remove and cover intercom speakers in PAC.	\$2,971.00
3. CCA-559R	Modify roof access stair at Area D.	\$11,843.00
4. CCA-577R2	Provide roller shades at Rooms 713, 717 and 720.	\$3,905.00
5. CCA-594	Provide motorized flag in Main Gym 708.	<u>\$8,248.00</u>
	Total This Change Order	\$30,321.00

The original Contract Sum was	\$	80,570,700.00
Net change by previously authorized Change Orders	\$	6,001,206.00
The Contract Sum prior to this Change Order was	\$	86,571,906.00
The Contract Sum will be increased by this change order	\$	30,321.00
The new Contract Sum including this Change Order will be	\$	86,602,227.00

The Contract Time will be unchanged by 0 days
The date of Substantial Completion as of the date of this Change Order therefore is: July 1, 2016

Pursuant to the Contract, the execution of this Change Order constitutes a waiver of claims by the Contractor arising out of the Work to be performed or deleted pursuant to this Change Order, except as specifically described herein. Reservation of rights will be deemed waived and are void unless the reserved rights are specifically described in detail to the satisfaction of the Owner and are initialed by the Owner.

NAC Architecture
2025 First Avenue, Suite 300
Seattle, WA 98121

Auburn School District #408
915 Fourth Street NE
Auburn, WA 98002

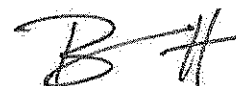
Lydig Construction Company
3180 139th Ave SE, Suite 110
Bellevue, WA 98005



By: Brent Compton
Date: May 16, 2016



By: Cindi Blansfield
Date:



By: Brandon Watts
Date: 5-18-16

FINANCE

1. Vouchers

Vouchers will be presented.

Recommendation:

That these vouchers be signed.

2. Financial Statements

Financial statements for the month of April will be presented for the board's information.

The following vouchers, as audited and certified by the Auditing Officer as required by RCW 42.24.080, and those expense reimbursement claims certified as required by RCW 42.24.090, are approved for payment. Those payments have been recorded on this listing which has been made available to the board.

As of May 23, 2016, the board, by a _____ vote, approves payments, totaling \$1,316,054.28. The payments are further identified in this document.

Total by Payment Type for Cash Account, US Bank of Washington:
Warrant Numbers 431556 through 431782, totaling \$1,316,054.28

Secretary _____	Board Member _____
Board Member _____	Board Member _____
Board Member _____	Board Member _____

Check Nbr	Vendor Name	Check Date	Check Amount
431556	*KING COUNTY SUPERIOR COURT	05/23/2016	1,292.71
431557	*KING COUNTY SUPERIOR COURT	05/23/2016	169.50
431558	410 QUARRY LLC	05/23/2016	115.85
431559	A A ASPHALTING INCORPORATED	05/23/2016	7,548.04
431560	A A ASPHALTING INCORPORATED	05/23/2016	361.15
431561	AGRISHOP INC	05/23/2016	32.76
431562	ALPINE PRODUCTS INC	05/23/2016	59.95
431563	ALTA LANGUAGE SERVICES INC	05/23/2016	720.00
431564	AMERICAN ACADEMY ~ GRADUATION	05/23/2016	35,075.00
431565	AMERICAN RED CROSS	05/23/2016	15.20
431566	ANIXTER INC	05/23/2016	2,238.53
431567	APPLY A LINE INC	05/23/2016	3,913.53
431568	ARAMARK UNIFORM SERVICES	05/23/2016	21.48
431569	ASIA PACIFIC GARDENING INC	05/23/2016	344.93
431570	AUBURN CHEVROLET	05/23/2016	128.30
431571	AUBURN MECHANICAL INC	05/23/2016	2,185.62
431572	AUBURN SCHOOL DIST 408 **	05/23/2016	1,000.00

Check Nbr	Vendor Name	Check Date	Check Amount
431573	AUBURN SENIOR H S	05/23/2016	160.37
431574	AUBURN SENIOR HIGH CULINARY AR	05/23/2016	275.00
431575	AUBURN YOUTH RESOURCES INC	05/23/2016	6,379.38
431576	AVANT ASSESSMENT LLC	05/23/2016	577.50
431577	AVERY, MAJ-BRITT	05/23/2016	4.00
431578	AZUR, JEFFRY	05/23/2016	50.00
431579	BARGREEN ELLINGSON INC	05/23/2016	94.61
431580	BESHIR, KEMERIA	05/23/2016	50.00
431581	BIRTH TO THREE DEVELOPMENTAL C	05/23/2016	32,832.00
431582	BRYSON SALES & SERVICE	05/23/2016	287.30
431583	BUTTS, VIRGINIA	05/23/2016	111.24
431584	CARPINITO BROTHERS INC	05/23/2016	1,110.00
431585	CASCADE BEAUTY COLLEGE	05/23/2016	1,634.33
431586	CDW GOVERNMENT INC	05/23/2016	1,066.70
431587	CENTURY LINK	05/23/2016	12,210.13
431588	CITY OF PACIFIC	05/23/2016	2,168.23
431589	COASTAL FARM & RANCH	05/23/2016	149.99
431590	COASTWIDE LABORATORIES	05/23/2016	4,062.07
431591	COBRA BEC INC	05/23/2016	17,020.37
431592	COBRA BEC INC	05/23/2016	814.37
431593	COMPREHENSIVE MENTAL HEALTH CE	05/23/2016	58.75
431594	CONTINUA GROUP	05/23/2016	3,500.00
431595	COOPER, LIANNE	05/23/2016	20.00
431596	CRUZ, LAURA A	05/23/2016	45.00
431597	CUBILLOS MORENO, GABRIELA	05/23/2016	1,041.98

Check Nbr	Vendor Name	Check Date	Check Amount
431598	CUMMINS INC	05/23/2016	158.79
431599	CUSTOM MECHANICAL SOLUTIONS IN	05/23/2016	870.53
431600	DAIRY FRESH FARMS INC	05/23/2016	27,354.13
431601	DEMCO INC	05/23/2016	230.73
431602	DRUG FREE BUSINESS	05/23/2016	206.00
431603	DYNAMIC LANGUAGE CENTER INC	05/23/2016	255.96
431604	EASTBAY INC	05/23/2016	1,164.69
431605	ECOLAB INC	05/23/2016	167.64
431606	EDUCATIONAL TESTING SERVICE IN	05/23/2016	550.00
431607	EK BEVERAGE COMPANY	05/23/2016	334.00
431608	ELECTROCOM	05/23/2016	591.30
431609	ELTEC SYSTEMS LLC	05/23/2016	3,278.43
431610	ERBAI, MENALIZA	05/23/2016	50.00
431611	Vendor Continued Check	05/23/2016	0.00
431612	FERGUSON ENTERPRISES INC #3007	05/23/2016	2,035.61
431613	FLEETPRIDE	05/23/2016	93.47
431614	FLORES, DORA	05/23/2016	22.00
431615	FOLLETT SCHOOL SOLUTIONS INC	05/23/2016	1,488.44
431616	FRED PRYOR SEMINARS	05/23/2016	3,300.00
431617	FULL COMPASS SYSTEMS LTD	05/23/2016	9,420.35
431618	GLOBAL EQUIPMENT CO	05/23/2016	403.95
431619	GLOBAL INNOVATIONS COTERIE LLC	05/23/2016	225.82
431620	GOMEZ, CHERIE	05/23/2016	158.76
431621	GOODY MAN DISTRIBUTING INC	05/23/2016	3,207.39
431622	GOPHER SPORT	05/23/2016	1,213.40

Check Nbr	Vendor Name	Check Date	Check Amount
431623	GOS PRINTING CORP	05/23/2016	735.52
431624	GRAINGER DEPT 810392688	05/23/2016	899.10
431625	GREEN RIVER COMMUNITY COLLEGE	05/23/2016	430,472.05
431626	GUARDIAN SECURITY SYSTEMS INC	05/23/2016	1,464.00
431627	HARTNESS, ADRIANE L	05/23/2016	7,650.00
431628	HD FOWLER COMPANY INC	05/23/2016	739.36
431629	HIGHLINE COMMUNITY COLLEGE	05/23/2016	69,298.60
431630	HOLLDORF, JANELLE	05/23/2016	175.00
431631	IMAGE MASTERS INC	05/23/2016	1,002.58
431632	INTERNATIONAL SOCIETY OF CERTI	05/23/2016	350.00
431633	JENKINS PIPELINE SERVICES LLC	05/23/2016	4,994.55
431634	JIMENEZ, ELVA	05/23/2016	115.00
431635	JOHNSTONE SUPPLY	05/23/2016	337.97
431636	JOSTENS INC	05/23/2016	1,393.42
431637	JUNIOR ACHIEVEMENT OF WASH	05/23/2016	615.00
431638	JW PEPPER & SON INC	05/23/2016	41.89
431639	KDL HARDWARE SUPPLY INC	05/23/2016	81.35
431640	KUHN, LISA M	05/23/2016	50.00
431641	LANGUAGE TESTING INTERNATIONAL	05/23/2016	80.00
431642	LONG BUILDING TECHNOLOGIES	05/23/2016	1,890.52
431643	MAPLES, TERESA A	05/23/2016	900.00
431644	MARZAN, EMELITA	05/23/2016	6.00
431645	MASTERCRAFT ELECTRIC INC	05/23/2016	125.00
431646	MAUER, ALEXIA	05/23/2016	1,835.13
431647	MAXIM STAFFING SOLUTIONS	05/23/2016	2,699.00

Check Nbr	Vendor Name	Check Date	Check Amount
431648	MICONTROLS INC	05/23/2016	897.64
431649	MICRO COMPUTER SYSTEMS INC	05/23/2016	1,031.49
431650	MUNOZ, FROYLAN	05/23/2016	10.00
431651	MUSIC & ARTS CENTER	05/23/2016	16,716.05
431652	MUSIC 123 INC	05/23/2016	49.90
431653	MUSIC IN MOTION	05/23/2016	181.49
431654	MUSIC IS ELEMENTARY	05/23/2016	132.00
431655	NW SCHOOL FOR DEAF & HARD OF H	05/23/2016	13,400.00
431656	OFFICE DEPOT INC ACCT#8011 073	05/23/2016	127.40
431657	ORCA PACIFIC INC	05/23/2016	1,330.71
431658	OUTPATIENT PHYSICAL THERAPY &	05/23/2016	9,546.00
431659	PACIFIC INTERPRETERS INC	05/23/2016	1,627.40
431660	PACIFIC SCIENCE CENTER	05/23/2016	180.00
431661	PACIFIC BALLROOM DANCE CO	05/23/2016	1,500.00
431662	PARK, SIMON	05/23/2016	50.00
431663	PATTERSON BUCHANAN FOBES & LEI	05/23/2016	1,123.69
431664	PETERSON COMPANY	05/23/2016	178.70
431665	PETRO CARD	05/23/2016	19,644.95
431666	PIANO SMITH	05/23/2016	525.00
431667	PIERCE COLLEGE	05/23/2016	7,017.71
431668	PITNEY BOWES POSTAGE BY PHONE	05/23/2016	7,500.00
431669	PITNEY BOWES PRESORT SERVICES	05/23/2016	2,696.27
431670	PLANK ROAD PUBLISHING INC	05/23/2016	905.87
431671	PLUMMASTER INC	05/23/2016	247.69
431672	PRAXAIR DISTRIBUTION INC	05/23/2016	139.38

Check Nbr	Vendor Name	Check Date	Check Amount
431673	PROCARE THERAPY INC	05/23/2016	986.00
431674	PROGRESSUS THERAPY INC	05/23/2016	12,448.42
431675	PUGET SOUND ENERGY ELECTRIC	05/23/2016	137,813.78
431676	Vendor Continued Check	05/23/2016	0.00
431677	PUGET SOUND ENERGY NAT GAS	05/23/2016	12,307.14
431678	PUGET SOUND EDUCATIONAL SERVIC	05/23/2016	1,500.00
431679	PUGET SOUND INSTRUMENTS	05/23/2016	325.22
431680	PUGET SOUND INSTRUMENTS	05/23/2016	133.85
431681	REXEL INC	05/23/2016	108.41
431682	RODDA PAINT CO	05/23/2016	244.76
431683	SCHOOL SPECIALTY INC	05/23/2016	1,342.91
431684	SEATTLE COMM COLLEGE DISTRICT	05/23/2016	2,048.70
431685	SEPULVEDA, LESLIE	05/23/2016	292.57
431686	SIMON, TIER E	05/23/2016	273.02
431687	SIX ROBBLEES INC	05/23/2016	1,384.74
431688	SMARSH INC	05/23/2016	100.00
431689	SOLIANT HEALTH	05/23/2016	4,875.00
431690	SOMCHIT, KAHMMENATHY	05/23/2016	18.00
431691	SONITROL PACIFIC	05/23/2016	270.00
431692	SOUND PUBLISHING INC	05/23/2016	409.13
431693	SPEEDY AUTO GLASS INC	05/23/2016	191.63
431694	Vendor Continued Check	05/23/2016	0.00
431695	STANSELL GLASS INC	05/23/2016	712.18
431696	STARKOVICH, MICHAEL W	05/23/2016	8.50
431697	STATE AUDITOR'S OFFICE LEGIS B	05/23/2016	2,443.90

Check Nbr	Vendor Name	Check Date	Check Amount
431698	SUPERIOR HVAC AND ELECTRICAL	05/23/2016	364.15
431699	TACOMA PIERCE CO VOLLEYBALL	05/23/2016	5,739.00
431700	TACOMA SCREW PRODUCTS INC	05/23/2016	379.60
431701	TECHNICAL SUPPORT SERVICES	05/23/2016	120.45
431702	TED BROWN MUSIC COMPANY	05/23/2016	101.07
431703	TENTS AND EVENTS PARTY RENTALS	05/23/2016	1,138.80
431704	TOLENTINO, INDIRA	05/23/2016	5.00
431705	TORRES, ARMINDA	05/23/2016	5.00
431706	TOTAL FILTRATION SERVICES, INC	05/23/2016	4,507.86
431707	TREEHOUSE FOR KIDS	05/23/2016	175.00
431708	TUIA, JACK STAR	05/23/2016	7.50
431709	TYPING AGENT LLC	05/23/2016	625.00
431710	UNIFIRST CORPORATION	05/23/2016	667.59
431711	UNIVERSAL LANGUAGE SERVICE INC	05/23/2016	2,248.42
431712	US HEALTHWORKS MEDICAL GROUP W	05/23/2016	48.00
431713	USA MOBILITY WIRELESS INC	05/23/2016	342.74
431714	VERIZON WIRELESS	05/23/2016	330.39
431715	WALMART SAMS CLUB	05/23/2016	104.50
431716	WARREN, ELEANOR J	05/23/2016	450.45
431717	WASH SCHOOL PERSONNEL ASSN	05/23/2016	410.00
431718	WEST COAST PLATEN COMPANY	05/23/2016	35.56
431719	WEST MUSIC	05/23/2016	351.67
431720	WHITNEY, AMBER	05/23/2016	10.00
431721	WILBUR ELLIS COMPANY LLC	05/23/2016	35.26
431722	WORLD LANGUAGE SERVICES LLC	05/23/2016	74.00

Check Nbr	Vendor Name	Check Date	Check Amount
431723	WSIPC NW ESD FISCAL AGENT	05/23/2016	23,959.17
431724	ZURAFF, LISA	05/23/2016	50.00
431725	COLUMBIA STATE BANK	05/23/2016	1,620.09
431726	DELL MARKETING LP % DELL USA L	05/23/2016	32,310.37
431727	EDNETICS INC	05/23/2016	28,471.11
431728	EMERSON, LEO S	05/23/2016	7,200.00
431729	HARGIS ENGINEERS INC	05/23/2016	29,767.75
431730	INSLEE BEST DOEZIE & RYDER PS	05/23/2016	3,122.72
431731	KING COUNTY DIRECTORS ASSN	05/23/2016	15,016.89
431732	LAKEHAVEN UTILITY DISTRICT	05/23/2016	58.30
431733	LINCOLN CONSTRUCTION INC	05/23/2016	33,859.88
431734	PBS ENGINEERING & ENVIRONMENTA	05/23/2016	1,256.96
431735	PERKINS COIE LLP	05/23/2016	157.50
431736	SCOTTYS GENERAL CONSTRUCTION I	05/23/2016	20,911.50
431737	STEELE ELECTRIC COMPANY	05/23/2016	10,218.70
431738	WELSH COMMISSIONING GROUPS INC	05/23/2016	2,691.00
431739	AIRGAS NOR PAC INC	05/23/2016	26.06
431740	AMERICAN CANCER SOCIETY WASH	05/23/2016	552.10
431741	ASHLAND CREEK PROMOTIONS LTD	05/23/2016	1,434.45
431742	AUBURN HIGH SCHOOL	05/23/2016	975.00
431743	AUBURN FOOD BANK	05/23/2016	943.83
431744	AUBURN BAND PARENTS ASSN	05/23/2016	100.00
431745	BOOMERS PHOTOGRAPHY	05/23/2016	162.90
431746	BUST A MOVE DJ	05/23/2016	500.00
431747	COLLEGIATE DESIGNS INC	05/23/2016	1,055.00

Check Nbr	Vendor Name	Check Date	Check Amount
431748	COSTCO	05/23/2016	3,234.56
431749	DEGOEDE BROTHERS LLC	05/23/2016	6,030.00
431750	DJ TROPHY AWARDS & ENGRAVING	05/23/2016	416.49
431751	DK CUSTOM INK	05/23/2016	119.00
431752	DORIAN STUDIO INC	05/23/2016	1,000.00
431753	DUGANS INCORPORATED	05/23/2016	650.00
431754	EK BEVERAGE COMPANY	05/23/2016	329.35
431755	EVERGREEN BOYS STATE INC	05/23/2016	125.00
431756	EVERGREEN GIRLS STATE	05/23/2016	240.00
431757	GOSNEY MOTOR PARTS INC	05/23/2016	345.49
431758	GREEN RIVER MUSIC EDUCATORS AS	05/23/2016	35.00
431759	K D GRAZIE INC	05/23/2016	540.00
431760	KIWANIS CLUB OF THE VALLEY	05/23/2016	412.00
431761	LAKE WASHINGTON HIGH BOOSTER C	05/23/2016	120.00
431762	NW CASCADE INC	05/23/2016	245.00
431763	NW FUNDRAISING	05/23/2016	1,331.06
431764	PACIFIC PUBLISHING COMPANY	05/23/2016	550.06
431765	PACIFIC WELDING SUPPLIES	05/23/2016	12.87
431766	SANDLAND PROMOTIONS	05/23/2016	121.93
431767	STAPLES BUSINESS ADVANTAGE	05/23/2016	903.44
431768	TC SPAN AMERICA	05/23/2016	1,714.68
431769	TEAM 1ST CUSTOM SOCKS	05/23/2016	1,112.82
431770	TH DESIGNS	05/23/2016	1,883.00
431771	WALMART SAMS CLUB	05/23/2016	260.72
431772	WASH INTERSCHOLASTIC ACTIVITIE	05/23/2016	90.00

Check Nbr	Vendor Name	Check Date	Check Amount
431773	WOLFGANG PUCK CATERING & EVENT	05/23/2016	1,391.92
431774	WORLDSTRIDES ONSTAGE	05/23/2016	62,323.00
431775	YANKEE CANDLE COMPANY INC	05/23/2016	686.40
431776	AUBURN EDUCATION ASSN	05/23/2016	1,000.00
431777	AUBURN RIVERSIDE H S	05/23/2016	80.00
431778	CASCADE M S	05/23/2016	85.00
431779	Vendor Continued Check	05/23/2016	0.00
431780	MT BAKER M S	05/23/2016	653.00
431781	RAINIER M S	05/23/2016	41.00
431782	WEST AUBURN HIGH SCHOOL	05/23/2016	597.70
227	Computer	Check(s) For a Total of	1,316,054.28

0	Manual	Checks For a Total of	0.00
0	Wire Transfer	Checks For a Total of	0.00
0	ACH	Checks For a Total of	0.00
227	Computer	Checks For a Total of	1,316,054.28
Total For 227 Manual, Wire Tran, ACH & Computer Checks			1,316,054.28
Less	0	Voided	Checks For a Total of 0.00
Net Amount			1,316,054.28

F U N D S U M M A R Y

Fund	Description	Balance Sheet	Revenue	Expense	Total
10	General Fund	4,142.90	926.00	1,029,892.78	1,034,961.68
20	Capital Projects	0.00	0.00	186,662.77	186,662.77
40	ASB Fund	-8.55	0.00	91,981.68	91,973.13
70	Private Purpose	0.00	1,000.00	1,456.70	2,456.70

The following vouchers, as audited and certified by the Auditing Officer as required by RCW 42.24.080, and those expense reimbursement claims certified as required by RCW 42.24.090, are approved for payment. Those payments have been recorded on this listing which has been made available to the board.

As of May 23, 2016, the board, by a _____ vote, approves payments, totaling \$65,475.86. The payments are further identified in this document.

Total by Payment Type for Cash Account, US Bank Wire Transfers:
Wire Transfer Payments 201500490 through 201500499, totaling \$65,475.86

Secretary _____	Board Member _____
Board Member _____	Board Member _____
Board Member _____	Board Member _____

Check Nbr	Vendor Name	Check Date	Check Amount
201500490	ASPIRE FUNDRAISING ~ MIDLAND F	05/23/2016	542.30
201500491	SPORTS CONNECTION LLC	05/23/2016	426.60
201500492	EASTBAY INC	05/23/2016	5,937.92
201500493	UNITED PARCEL SERVICE	05/23/2016	59.80
201500494	STAPLES BUSINESS ADVANTAGE	05/23/2016	2,256.23
201500495	GOSNEY MOTOR PARTS INC	05/23/2016	662.20
201500496	AT & T	05/23/2016	251.81
201500497	CEDAR GROVE ORGANICS RECYCLING	05/23/2016	2,231.75
201500498	CITY OF AUBURN UTILITIES	05/23/2016	49,332.14
201500499	REPUBLIC SERVICES #176	05/23/2016	3,775.11

10	Wire Transfer Check(s) For a Total of	65,475.86
----	---------------------------------------	-----------

0	Manual	Checks For a Total of	0.00
10	Wire Transfer	Checks For a Total of	65,475.86
0	ACH	Checks For a Total of	0.00
0	Computer	Checks For a Total of	0.00
Total For 10	Manual, Wire Tran, ACH & Computer	Checks	65,475.86
Less 0	Voided	Checks For a Total of	0.00
	Net Amount		65,475.86

F U N D S U M M A R Y

Fund	Description	Balance Sheet	Revenue	Expense	Total
10	General Fund	0.00	0.00	58,569.04	58,569.04
40	ASB Fund	0.00	0.00	6,906.82	6,906.82

The following vouchers, as audited and certified by the Auditing Officer as required by RCW 42.24.080, and those expense reimbursement claims certified as required by RCW 42.24.090, are approved for payment. Those payments have been recorded on this listing which has been made available to the board.

As of May 23, 2016, the board, by a _____ vote, approves payments, totaling \$885,918.02. The payments are further identified in this document.

Total by Payment Type for Cash Account, AP Direct Dep Settlement Accou:
ACH Numbers 151601893 through 151602064, totaling \$885,918.02

Secretary _____	Board Member _____
Board Member _____	Board Member _____
Board Member _____	Board Member _____

Check Nbr	Vendor Name	Check Date	Check Amount
151601893	ADAMS, VENDALYN	05/23/2016	175.00
151601894	ALONZO, VICKI LEE	05/23/2016	337.24
151601895	AMADO, SONIA	05/23/2016	4.32
151601896	AMERICAN TIRE DISTRIBUTORS INC	05/23/2016	496.57
151601897	ARRIGONI, TODD JOSEPH	05/23/2016	449.50
151601898	AUBERT, DOUGLAS JAMES	05/23/2016	162.22
151601899	AUBURN SCHOOL DIST REVOLVING F	05/23/2016	1,693.94
151601900	AUSTIN, STEPHANIE RACHELL	05/23/2016	371.38
151601901	BARLOW, COLLEEN MARIE	05/23/2016	188.13
151601902	BATES, VICKI	05/23/2016	318.98
151601903	BATTRAM, CINDI ANN	05/23/2016	195.00
151601904	BECKETT, MARYELLEN KAY	05/23/2016	500.00
151601905	BLOEDEL, JEANNE H	05/23/2016	239.00
151601906	BREDERECK, RICHARD PAUL	05/23/2016	115.00
151601907	BRYANT, VALERIE ELTON	05/23/2016	30.40
151601908	BUDZYNSKI, NICOLE MARIE	05/23/2016	19.58
151601909	BURT, TIFFANY ANN	05/23/2016	73.61

Check Nbr	Vendor Name	Check Date	Check Amount
151601910	BUSHAW, BREANNA MARIE	05/23/2016	500.00
151601911	CALLAHAM, CHRISTINE MARIE	05/23/2016	135.00
151601912	CAMPBELL-AIKENS, JANIS GAIL	05/23/2016	13.65
151601913	CAMPBELL, JULIE D	05/23/2016	21.60
151601914	CAMPBELL, LORIE L	05/23/2016	150.00
151601915	CAREERSTAFF UNLIMITED INC	05/23/2016	4,396.50
151601916	CARR, CHRISTOPHER JEFFREY	05/23/2016	410.39
151601917	CASAD, TANA H	05/23/2016	33.48
151601918	CAVENEY CONSULTANT SERVICES	05/23/2016	1,725.00
151601919	CHESNUT, KELSY NICOLE	05/23/2016	175.00
151601920	CLARK, MONICA ALICIA	05/23/2016	213.34
151601921	CLERGET, HEATHER A	05/23/2016	71.16
151601922	CLOUSER, JENNIFER LYNN	05/23/2016	229.03
151601923	COKE, MARGARET JEANNE	05/23/2016	257.14
151601924	CUMBERLAND THERAPY SERVICES LL	05/23/2016	2,550.00
151601925	DALOS, HARRIETT METZLER	05/23/2016	81.97
151601926	DANIELS, TREENA JOY	05/23/2016	282.45
151601927	DAVIS, MARY KATHERYN	05/23/2016	570.88
151601928	DIEBAG, JAMES JACK	05/23/2016	33.76
151601929	DIXON, LEIANNA ELIZABETH	05/23/2016	175.00
151601930	EVANS, DANNY C	05/23/2016	115.00
151601931	FAWVER, RICHARD ALLEN	05/23/2016	44.12
151601932	FIGUEROA, MARCELA	05/23/2016	233.11
151601933	FINLEY SCOTT, ERIN L	05/23/2016	87.23
151601934	Vendor Continued Check	05/23/2016	0.00

Check Nbr	Vendor Name	Check Date	Check Amount
151601935	FOOD SERVICES OF AMERICA *	05/23/2016	131,408.76
151601936	FOOD SERVICES OF AMERICA **	05/23/2016	8,494.50
151601937	FOOD SERVICES OF AMERICA ***	05/23/2016	35.45
151601938	FRUEH, CHRISTINA LEIGH	05/23/2016	177.35
151601939	GARCIA, DEAYRDRA KRISTINE	05/23/2016	75.00
151601940	GARCIA, RYAN CIELOLINDO	05/23/2016	175.00
151601941	GARY, DEBRA O	05/23/2016	41.26
151601942	GIBSON-MYERS, ELIZABETH ANN	05/23/2016	45.36
151601943	GOAD, PATRICIA KIM	05/23/2016	119.35
151601944	GRIMM, DEAN LAIN	05/23/2016	28.51
151601945	GUEST, MICHAELA DAWN	05/23/2016	56.05
151601946	GUISINGER, CHAD MICHAEL	05/23/2016	35.41
151601947	HALES, KYM MICHELE	05/23/2016	64.00
151601948	HANSEN, NECIA LEANN KINCAID	05/23/2016	83.92
151601949	HENRY, KATIE EMILY	05/23/2016	302.40
151601950	HIDALGO, OFELIA ESTELA	05/23/2016	25.00
151601951	HILLS, CHELSEA ANNE	05/23/2016	500.00
151601952	HOKSBERGEN, MARILYN J	05/23/2016	4.32
151601953	HOLBROOK, DEANNA LYNN	05/23/2016	498.00
151601954	HOLT, MARIANNE L	05/23/2016	49.64
151601955	HOUGLUM, ROSEMARY	05/23/2016	135.86
151601956	IBBETSON THERAPEUTIC SERVICES	05/23/2016	9,664.00
151601957	IRELAND, LINDSEY N	05/23/2016	44.08
151601958	ISELIN, DENISE ANN	05/23/2016	172.49
151601959	JACOBSMA, AMANDA CHRISTINE	05/23/2016	52.70

Check Nbr	Vendor Name	Check Date	Check Amount
151601960	JEWETT, MARICE CAILEY	05/23/2016	350.00
151601961	JOHNSON, BENJAMIN STEVEN	05/23/2016	500.00
151601962	JONES, JANA LYNN	05/23/2016	500.00
151601963	JONES, RANDAL STEVEN	05/23/2016	20.79
151601964	JORDAN, GARY D	05/23/2016	53.35
151601965	JORGENSEN, TYLER H	05/23/2016	9.99
151601966	JUNELL, KATARINA ANNA	05/23/2016	349.00
151601967	KEELEY, DEBRA D	05/23/2016	20.00
151601968	KENWORTHY, ROBERT DAVID	05/23/2016	63.72
151601969	KIILSGAARD, LESLIE LOUISE	05/23/2016	141.03
151601970	KIM, MIRA	05/23/2016	18.04
151601971	KING, NICOLE JANE	05/23/2016	98.82
151601972	KINKELA, MERILEE	05/23/2016	28.08
151601973	KNUDTSON, ROBYN RENEE	05/23/2016	587.76
151601974	LAM, TAN VAN	05/23/2016	15.56
151601975	LASKEY, SAMANTHA MEHAFFEY	05/23/2016	27.54
151601976	LEWIS, JENNIFER LYNN	05/23/2016	158.50
151601977	LLERA, KANDICE V	05/23/2016	68.26
151601978	LONG, STEPHANIE JANAE	05/23/2016	239.00
151601979	LOPEZ, RICO M	05/23/2016	44.71
151601980	LOUIE, ALISA LYNN	05/23/2016	150.00
151601981	LOVEJOY, BRIAN EUGENE	05/23/2016	495.00
151601982	LUTHER, CYNTHIA ELIZABETH	05/23/2016	1,400.00
151601983	MANNING, TAMI R	05/23/2016	500.00
151601984	MARRERO BURGOS, ZAYRA ENID	05/23/2016	481.00

Check Nbr	Vendor Name	Check Date	Check Amount
151601985	MASON, LISA J	05/23/2016	52.51
151601986	MATTISON, SARAH ELIZABETH	05/23/2016	23.87
151601987	MAUCOTEL, JEANEE	05/23/2016	136.62
151601988	MAYER, MARGARET S	05/23/2016	99.58
151601989	MCSWAIN, CHRISTINA ELAINE	05/23/2016	500.00
151601990	MEHLHOFF, LAURIE ELAINE	05/23/2016	20.00
151601991	MICKELSON, DANIEL C	05/23/2016	25.00
151601992	MILLARD, TERESA CLAIRE	05/23/2016	495.00
151601993	MITCHELL, CYNTHIA A	05/23/2016	42.95
151601994	MULICK, PATRICK JAMES	05/23/2016	62.96
151601995	MYERS, JACQUELINE DE HAVEN	05/23/2016	54.00
151601996	NAGEL, MICHELLE ANN	05/23/2016	14.69
151601997	NIXON, KERRI LYNN	05/23/2016	20.00
151601998	PETRINA, TAMI	05/23/2016	46.13
151601999	PICATTI-BAKER, MOLLY KATHRYN	05/23/2016	90.00
151602000	REIN, JENNIFER LEE	05/23/2016	67.25
151602001	RICE, SHERYL ANN	05/23/2016	82.34
151602002	RICHARDS, CHERYL A	05/23/2016	114.48
151602003	RITTER, ROBIN	05/23/2016	414.00
151602004	SAARENAS, ROBYN NEIGEL	05/23/2016	52.67
151602005	SANDLAND, GINA M	05/23/2016	500.00
151602006	SAXON, JAN K	05/23/2016	68.58
151602007	SHEMCHUK, NATALYA A	05/23/2016	28.08
151602008	SHU-MINUTOLI, KAREN	05/23/2016	112.15
151602009	SLEETH, AMY JO	05/23/2016	38.52

Check Nbr	Vendor Name	Check Date	Check Amount
151602010	SMITH, KELLE W	05/23/2016	25.00
151602011	SPEER, CHELSEY	05/23/2016	63.62
151602012	STRAND, DEBRA MARIE	05/23/2016	83.27
151602013	SULLIVAN, FRANCINE A	05/23/2016	229.00
151602014	SULLIVAN, LINDA CHANTAL	05/23/2016	51.84
151602015	SUNBELT STAFFING LLC	05/23/2016	2,812.50
151602016	SWANSON, PENNI J	05/23/2016	10.80
151602017	THOMAS, JULIA NICOLE	05/23/2016	42.14
151602018	TURNER, MEGAN DENISE	05/23/2016	22.41
151602019	TYSON, BRITTANY BELL JEAN	05/23/2016	27.22
151602020	UEPA, MONICA NICOLE	05/23/2016	250.00
151602021	UFFALUSSY LAFAYETTE, LESLIE B	05/23/2016	32.83
151602022	Vendor Continued Check	05/23/2016	0.00
151602023	US BANK CORP PROCUREMENT CARD	05/23/2016	61,773.76
151602024	US BANK CORP TRAVEL PAYMENT	05/23/2016	4,500.35
151602025	US BANK CTE P CARDS	05/23/2016	28,036.98
151602026	WHITE, BETH ANN	05/23/2016	50.00
151602027	WILKINSON, LISA M	05/23/2016	56.00
151602028	WILSON, LISA J	05/23/2016	15.12
151602029	WOOLMAN, KELLY JEAN	05/23/2016	74.45
151602030	ZIEGLER, MARK LEVON	05/23/2016	96.31
151602031	LYDIG CONSTRUCTION INC	05/23/2016	568,825.10
151602032	US BANK CORP PROCUREMENT CARD	05/23/2016	1,161.29
151602033	ALLEN, J SCOTT	05/23/2016	163.09
151602034	AUBURN SCHOOL DIST REVOLVING F	05/23/2016	125.00

Check Nbr	Vendor Name	Check Date	Check Amount
151602035	AUBURN SENIOR HIGH IMPREST	05/23/2016	2,523.03
151602036	BRYANT, VALERIE ELTON	05/23/2016	3.00
151602037	CARTER, AMBER GAYLE	05/23/2016	38.00
151602038	CHAR, JAMES A	05/23/2016	226.72
151602039	CRATER, LAUREN BREANNE	05/23/2016	90.45
151602040	DAVIDSON, CARY WARREN	05/23/2016	147.00
151602041	DEGROOT, KAREN MARIE	05/23/2016	203.00
151602042	DOZIER, ALETHEA CARLOS	05/23/2016	25.60
151602043	FOOD SERVICES OF AMERICA	05/23/2016	1,838.04
151602044	KNUDTSON, ROBYN RENEE	05/23/2016	38.31
151602045	LEWIS, STEVEN CHRISTOPHER	05/23/2016	91.90
151602046	LOCKE, ROBERTA JEAN	05/23/2016	155.00
151602047	LUDWIGSON, CHRISTINE ANN	05/23/2016	40.35
151602048	MACDOUGALL, JOEL RYAN	05/23/2016	428.67
151602049	NEWCOMB, AKIKO NITTA	05/23/2016	120.56
151602050	PIZZA TIME	05/23/2016	695.17
151602051	RAPHAEL, KATHLEEN L	05/23/2016	34.08
151602052	REMPFER, SONYA ANN	05/23/2016	20.69
151602053	ROBINSON, CATHY ANN	05/23/2016	144.15
151602054	ROWE, ALESHA MARIE	05/23/2016	25.31
151602055	STENSON, KIMBERLY MARIE	05/23/2016	84.86
151602056	THOMAS, JANA DARLENE	05/23/2016	242.09
151602057	Vendor Continued Check	05/23/2016	0.00
151602058	US BANK CORP PROCUREMENT CARD	05/23/2016	26,713.86
151602059	US BANK CORP TRAVEL PAYMENT	05/23/2016	3,042.81

Check Nbr	Vendor Name	Check Date	Check Amount
151602060	VAN EATON, MICHAEL	05/23/2016	119.82
151602061	WAY, PHILLIP R	05/23/2016	78.61
151602062	WHARTON, TRICIA ANNE	05/23/2016	309.24
151602063	WILKINSON, LISA M	05/23/2016	20.30
151602064	US BANK CORP PROCUREMENT CARD	05/23/2016	244.70

172 ACH

Check(s) For a Total of

885,918.02

0	Manual	Checks For a Total of	0.00
0	Wire Transfer	Checks For a Total of	0.00
172	ACH	Checks For a Total of	885,918.02
0	Computer	Checks For a Total of	0.00
Total For 172	Manual, Wire Tran, ACH & Computer Checks		885,918.02
Less 0	Voided	Checks For a Total of	0.00
	Net Amount		885,918.02

F U N D S U M M A R Y

Fund	Description	Balance Sheet	Revenue	Expense	Total
10	General Fund	1,536.19	0.00	276,362.03	277,898.22
20	Capital Projects	0.00	0.00	569,986.39	569,986.39
40	ASB Fund	-34.55	0.00	37,823.26	37,788.71
70	Private Purpose	0.00	0.00	244.70	244.70

AUBURN SCHOOL DISTRICT NO. 408

FINANCIAL STATEMENTS
FOR
APRIL 2016

AUBURN SCHOOL DISTRICT NO. 408
MONTHLY FINANCIAL REPORTS
TABLE OF CONTENTS

- I. Combined Balance Sheet
 - A. Governmental Funds
 - B. Trust Funds and Account Groups
- II. Budget Status Reports
 - A. General Fund
 - B. Transportation Vehicle Fund
 - C. Capital Projects Fund
 - D. Debt Service Fund
 - E. ASB Fund
 - 1. High Schools
 - 2. Middle Schools
- III. Private Purpose Trust Fund Statement
- IV. NBN Employee Benefits Trust Fund Statement
- V. Local Grants

AUBURN SCHOOL DISTRICT NO. 408
BALANCE SHEETS - GOVERNMENTAL FUNDS
April 30, 2016

	GENERAL	TRANSPORT VEHICLE	CAPITAL PROJECTS	DEBT SERVICE	ASB
ASSETS					
Cash and cash equivalents	23,408,432	2,076,469	44,548,109	9,374,782	1,706,275
Restricted Cash	21,985	2,683	94,167	29,378	4,304
Property taxes receivable	21,818,392	-48	2,114,426	8,984,258	
Accounts receivable	300,536				0
Interest receivable	0	0	0	0	0
Due from other funds	0	0	0	0	0
Due from other governments	0		108,597		
Inventory of supplies	299,919				
Prepays	0				0
Total Assets	45,849,263	2,079,104	46,865,298	18,388,417	1,710,580
LIABILITIES and EQUITY					
Liabilities:					
Accounts payable	43,940		0		38,830
Estimated Unemployment Payable	26,506				
Due to other governments	10,225	1,265	370	13,710	2,001
Due to other funds	0		44,376		0
Deferred revenue	21,818,392	-48	2,118,976	8,984,258	0
Total Liabilities	21,899,062	1,217	2,163,722	8,997,968	40,831
Equity:					
Non Spendable Fund Bal--Inven	549,946				
Restricted for Food Services	2,115,257				
Restricted from Bond Proceeds			9,875,565		
Restricted from Levy Proceeds			9,209,381		
Restricted from State Proceeds			20,417,981		
Restricted from Impact Fees			-370,441		
Restricted for Fund Purpose		2,070,231			1,669,749
Restricted to Debt Service				1,655,164	
Assigned to Contingencies	300,000				
Assigned to Other Purposes	1,800,000				
Assigned To Fund Purposes		7,656	5,569,090	7,735,285	
Unassigned Fund Balance	19,184,997				
Total Equity	23,950,200	2,077,887	44,701,577	9,390,449	1,669,749
Total Liabilities and Equity	45,849,263	2,079,104	46,865,298	18,388,417	1,710,580

AUBURN SCHOOL DISTRICT NO. 408
BALANCE SHEETS - TRUST FUNDS AND ACCOUNT GROUPS
April 30, 2016

	TRUST FUNDS		ACCOUNT GROUPS	
	PRIV PURP TRUST	NBN EMPLOY BENEFITS	GENERAL FIXED ASSETS	GENERAL LONG-TERM DEBT
ASSETS				
Cash and cash equivalents	582,533	172,330		
Restricted Cash	2,050	600		
Due From Other Funds	0	0		
Accounts receivable				
Interest receivable	0	0		
Fixed assets			273,385,864	
Other debits:				
Amount available in Debt Service Fund				9,390,449
Amount to be provided for retirement of general long-term obligations				109,133,589
Total Assets	584,584	172,930	273,385,864	118,524,038
LIABILITIES and EQUITY				
Liabilities:				
Accounts Payable	0	0		
Compensated absences payable				2,939,038
Due to other governments	965	283		
Due To Other Funds		0		
General obligation bonds payable				115,585,000
Total Liabilities	965	283	0	118,524,038
Equity:				
Investment in general fixed assets			273,385,864	
Fund balances:				
Assigned To Fund Purposes	583,619	172,647		
Total Equity	583,619	172,647	273,385,864	0
Total Liabilities and Equity	584,584	172,930	273,385,864	118,524,038

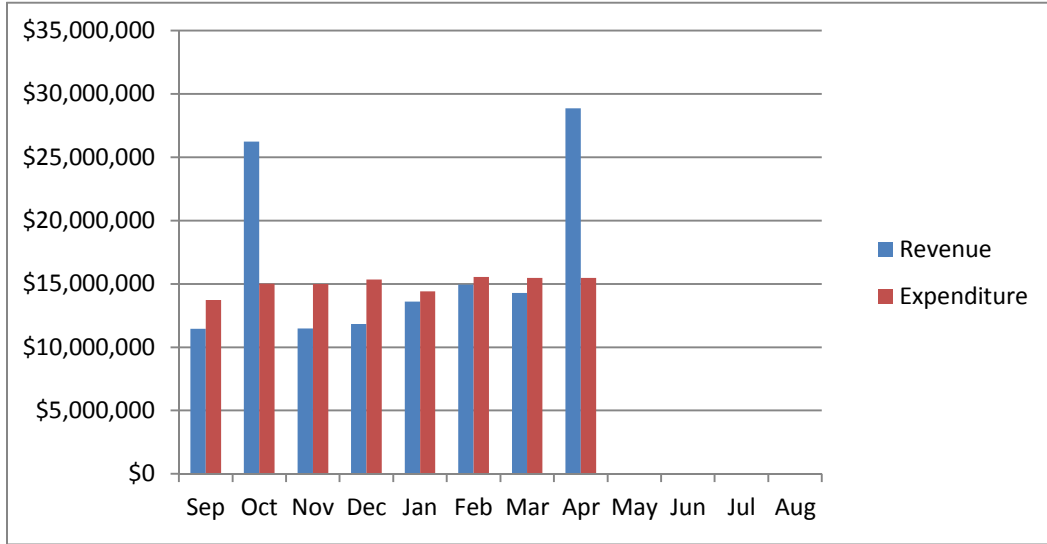
<p>Auburn School District No. 408</p> <p>General Fund Budget Status Summary</p>	
---	--

	REVENUE			EXPENDITURES			FUND BALANCE
Fiscal Year	Average	Actual	Actual	Average	Actual	Monthly	Beginning
2014 - 15	Cum %	Cum %	Monthly	Cum %	Cum %**	Amount	9,416,432
September	5.64%	5.63%	9,600,271	6.59%	11.23%	11,493,198	7,523,505
October	19.96%	19.93%	24,381,007	14.62%	18.99%	13,998,540	17,905,973
November	27.27%	26.57%	12,457,337	22.71%	26.78%	14,097,667	15,140,231
December	33.90%	33.18%	11,280,745	30.57%	34.44%	13,715,438	12,705,623
January	40.39%	39.91%	11,049,790	38.24%	42.20%	13,366,760	10,814,353
February	46.91%	46.82%	11,114,885	46.01%	49.17%	13,541,044	8,936,027
March	54.03%	54.20%	12,123,196	54.11%	54.11%	14,124,959	7,367,771
April	68.71%	69.23%	24,991,693	62.38%	64.91%	14,418,327	18,551,214
May	76.52%	77.04%	13,295,630	70.27%	72.61%	13,753,159	18,093,684
June	81.15%	81.97%	7,883,016	78.32%	80.67%	14,037,824	12,442,773
July	88.71%	89.74%	12,879,517	86.60%	88.58%	14,437,607	11,242,453
August	98.02%	99.05%	15,843,044	96.23%	96.22%	16,779,340	10,306,157
			Revenue			Expenditure	Fund Balance
Anticipated - First Budget			170,274,046			174,344,494	5,962,883
Actual - At Fiscal Year End			168,650,646			167,760,921	10,306,157
** Includes encumbrances.							

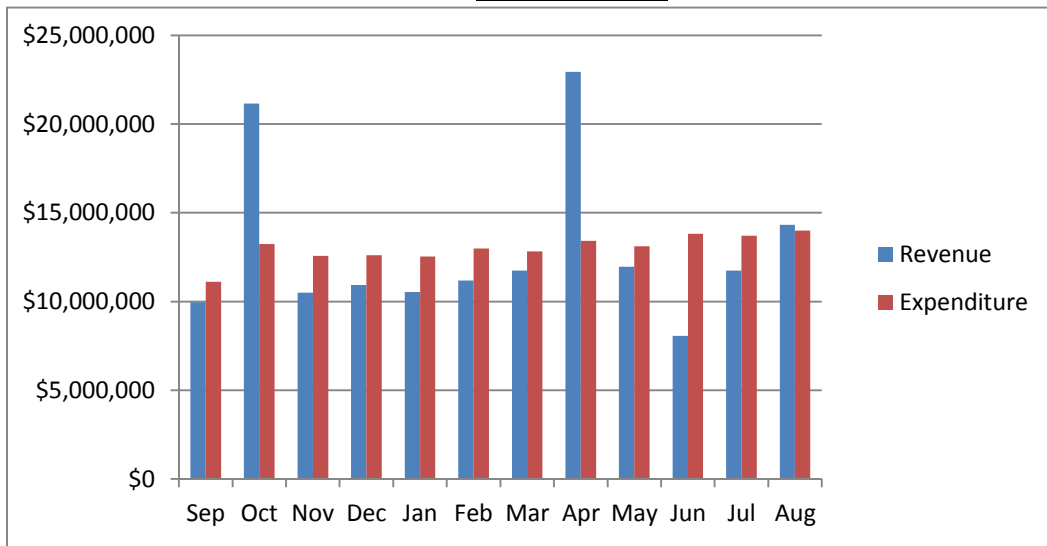
	REVENUE			EXPENDITURES			FUND BALANCE
Fiscal Year 2013-14	Average Cum %	Actual Cum %	Actual Monthly	Average Cum %	Actual Cum %**	Monthly Amount	Beginning 10,133,329
September	6.76%	6.51%	9,950,137	11.19%	11.15%	11,113,769	8,969,697
October	19.63%	20.36%	21,159,285	19.66%	19.15%	13,247,446	16,881,536
November	26.73%	27.23%	10,494,071	27.00%	26.90%	12,563,614	14,811,993
December	34.26%	34.39%	10,933,571	34.53%	34.40%	12,617,333	13,128,231
January	41.53%	41.28%	10,526,689	42.31%	41.97%	12,539,519	11,115,401
February	48.89%	48.60%	11,182,251	50.04%	49.91%	12,981,238	9,316,414
March	56.54%	56.29%	11,749,451	57.80%	57.60%	12,820,932	8,244,933
April	70.37%	71.31%	22,945,138	66.38%	65.65%	13,411,868	17,778,203
May	78.49%	79.14%	11,965,259	74.16%	73.50%	13,119,004	16,624,458
June	83.94%	84.41%	8,057,108	81.77%	82.10%	13,808,972	10,872,594
July	91.49%	92.10%	11,749,445	89.63%	90.25%	13,713,359	8,908,680
August	100.07%	101.48%	14,319,827	97.25%	98.14%	14,002,912	9,225,640
			Revenue			Expenditure	Fund Balance
Anticipated - First Budget			152,776,040			158,891,993	4,808,633
Actual - At Fiscal Year End			155,029,778			155,939,966	9,416,432
** Includes encumbrances.							

AUBURN SCHOOL DISTRICT No. 408 GENERAL FUND

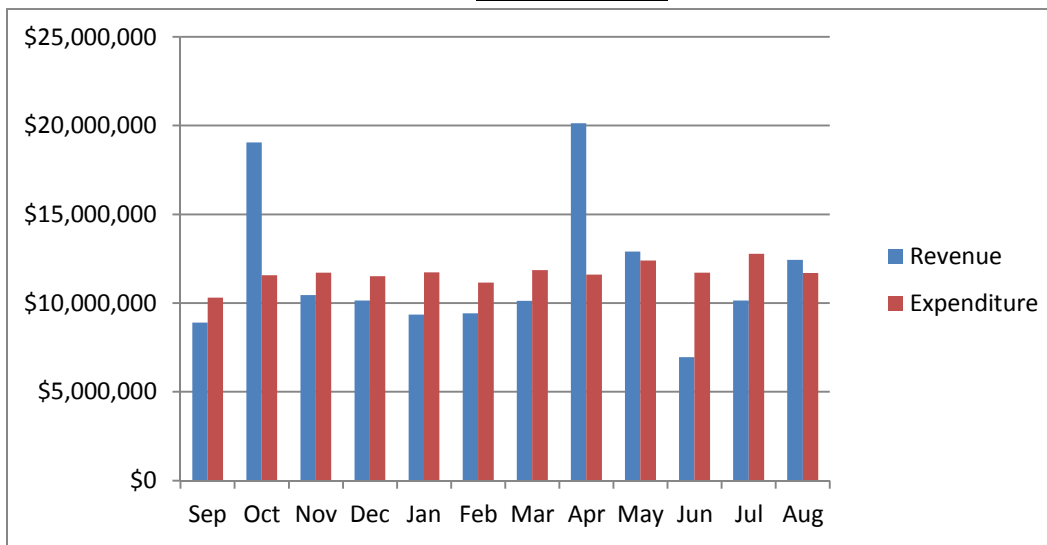
2015 - 16



2014 - 15



2013 - 14



Auburn School District No. 408
General Fund Budget Status
For the Month of April, 2016

	Annual Budget	Actual For Month	Total For Year	Encumbrance	Balance	Percent
TOTAL BEGINNING FUND BALANCE	\$ 10,000,000		10,310,508			
REVENUES AND OTHER FINANCING SOURCES						
1000 Local Taxes	38,375,108	14,981,066	33,534,699		4,840,409	87.39%
2000 Local Non-Tax	9,044,074	340,647	3,049,938		5,994,136	33.72%
3000 State, General Purpose	102,804,458	10,481,426	70,621,266		32,183,192	68.69%
4000 State, Special Purpose	24,208,994	2,318,394	17,299,949		6,909,045	71.46%
5000 Federal, General Purpose	8,383	1	6,537		1,846	77.98%
6000 Federal, Special Purpose	16,671,208	727,872	8,662,683		8,008,525	51.96%
7000 Revenues from Other District	500,000	2,863	320,503		179,497	64.10%
8000 Revenues from Other Agencies	102,700	-	106,018		(3,318)	103.23%
9000 Other Financing Sources	-	25	1,860		(1,860)	0.00%
Total Revenues & Other Finance Sources	191,714,925	28,852,294	133,603,451	-	58,111,474	69.69%
EXPENDITURES						
00 Regular Instruction	110,925,485	8,688,783	69,436,436	31,433,248	10,055,801	90.93%
10 Federal Stimulus	1,078,839	40,085	467,825	22,878	588,136	45.48%
20 Special Ed Instruction	23,008,590	1,950,857	15,548,562	7,170,796	289,232	98.74%
30 Vocational Instruction	7,088,356	565,105	4,263,707	2,119,564	705,085	90.05%
50&60 Compensatory Education	13,721,524	986,588	7,720,380	3,550,779	2,450,365	82.14%
70 Other Instructional Pgms	3,032,181	94,738	671,940	265,589	2,094,653	30.92%
80 Community Services	1,390,747	74,303	582,766	171,730	636,251	54.25%
90 Support Services	34,941,425	3,059,655	21,272,143	10,471,286	3,197,996	90.85%
Total Expenditures	195,187,147	15,460,114	119,963,759	55,205,870	20,017,518	89.74%
Excess Revenues/Other Financing Sources						
Over (under) Expend & Oth Financing Uses	(3,472,222)	13,392,180	13,639,692			
Total Ending Fund Balance	\$ 6,527,778		23,950,200			
Ending Fund Balance Accounts						
GL 821 Restricted for Carryovers						
GL 828 Restricted for Food Services	-		2,115,257			
GL 840 Nonspendable Fund Bal - Inv	-		549,946			
GL 875 Unrsrvd Dsgntd-Conting	-		300,000			
GL 888 Assigned to Other Purposes	-		1,800,000			
GL 890 UnRsrvd Undsgntd Fnd Bal	6,527,777		19,184,997			
Total Ending Fund Balance	\$ 6,527,777		\$ 23,950,200			
Fund Balance % of Expenditures	3%		20%			

Auburn School District No. 408
Capital Projects Fund Budget Status
For the Month of April, 2016

	Annual Budget	Actual For Month	Total For Year	Encumbrance	Balance	Percent
TOTAL BEGINNING FUND BALANCE	\$ 40,522,320		\$ 43,284,549			
REVENUES AND OTHER FINANCING SOURCES						
1000 Local Taxes	6,111,538	1,421,294	5,362,761		748,777	87.75%
2000 Local Non-Tax	2,034,253	103,937	626,674		1,407,579	30.81%
3000 State, General Purpose	-	-	-		-	0.00%
4000 State, Special Purpose	12,000,000	-	8,146,802		3,853,198	67.89%
5000 Federal, General Purpose	-	-	-		-	0.00%
6000 Federal, Special Purpose	-	-	-		-	0.00%
7000 Revenues from Other District	-	-	-		-	0.00%
8000 Revenues from Other Agencies	-	-	-		-	0.00%
9000 Other Financing Sources	-	-	-		-	0.00%
Total Revenues & Other Financing Sources	20,145,791	1,525,231	14,136,236	-	6,009,555	70.17%
EXPENDITURES						
10 Sites	-	-	3,560	-	(3,560)	0.00%
20 Buildings	55,299,500	978,962	10,668,240	1,469,635	43,161,625	21.95%
30 Equipment	3,600,000	502,882	1,978,101	73,077	1,548,822	56.98%
40 Energy	-	8,783	69,308	90,414	(159,722)	0.00%
50 Sales & Lease Expenditures		-	-	-	-	0.00%
60 Bond Issuance Expenditures		-	-	-	-	0.00%
90 Debt		-	-	-	-	0.00%
Total Expenditures	58,899,500	1,490,627	12,719,209	1,633,125	44,547,166	24.37%
Excess Revenues/Other Financing Sources Over (under) Expend. & Oth Financing Uses	(38,753,709)	34,604	1,417,028			
Total Ending Fund Balance	\$ 1,768,611		\$ 44,701,577			
Ending Fund Balance Accounts						
GL 861 Restricted from Bond Proceeds	(22,881,824)		9,875,565			
GL 862 Restricted from Levy Proceeds	10,283,350		9,209,381			
GL 863 Restricted from State Proceeds	400,832		20,417,981			
GL 865 Restricted from Other Proceeds	(68,000)		-			
GL 866 Restricted from Impact Fees	1,600,000		(370,441)			
GL 889 Assigned to Fund Purpose	12,434,253		5,569,090			
GL 890 UnRsrvd Undsgntd Fnd Bal						
Total Ending Fund Balance	\$ 1,768,611		\$ 44,701,577			

Auburn School District No. 408
ASB Fund Budget Status
For the Month of April, 2016

	Annual Budget	Actual For Month	Total for Year	Encumb	Balance	Percent
TOTAL BEGINNING FUND BALANCE	\$ 1,209,158		\$ 1,455,536			
REVENUES AND OTHER FINANCING SOURCES						
1000 General Student Body	1,757,962	28,778	559,150		1,198,812	31.81%
2000 Athletics	274,070	11,128	173,472		100,598	63.29%
3000 Classes	266,435	14,762	69,729		196,706	26.17%
4000 Clubs	1,827,047	135,587	964,537		862,510	52.79%
6000 Private Moneys	116,070	3,031	45,630		70,440	39.31%
Total Revenues & Other Financing Sources	4,241,584	193,287	1,812,517	-	2,429,067	42.73%
EXPENDITURES						
1000 General Student Body	1,397,979	40,808	388,623	23,842	985,513	29.50%
2000 Athletics	404,223	6,244	210,195	17,495	176,533	56.33%
3000 Classes	273,824	1,794	43,634	3,500	226,690	17.21%
4000 Clubs	2,065,470	150,510	898,868	127,555	1,039,048	49.69%
6000 Private Moneys	114,620	30,553	56,985	-	57,635	49.72%
Total Expenditures	4,256,116	229,908	1,598,304	172,392	2,485,420	41.60%
Excess Revenues/Other Financing Sources Over (under) Expend. & Oth Financing Uses	(14,532)	(36,622)	214,213			
Total Ending Fund Balance	\$ 1,194,626		\$ 1,669,749			
Ending Fund Balance Accounts						
GL 819 Restricted for Fund Purpose	1,194,626		1,669,749			
GL840 Nonspendable-Inven/Prepaid			-			
GL 889 Assigned to Fund Purposes						
Total Ending Fund Balance	\$ 1,194,626		\$ 1,669,749			

Auburn School District No. 408
Debt Service Fund Budget Status
For the Month of April, 2016

	Annual Budget	Actual For Month	Total Year	Encumbrance	Balance	Percent
TOTAL BEGINNING FUND BALANCE	\$ 5,992,670		\$ 6,189,257			
REVENUES AND OTHER FINANCING SOURCES						
1000 Local Taxes	14,798,633	6,166,507	13,073,017		1,725,616	88.34%
2000 Local Non-Tax	60,910	1,818	17,644		43,266	28.97%
3000 State, General Purpose		-	-		-	0.00%
5000 Federal, General Purpose		-	-		-	0.00%
6000 Federal, Special Purpose		-	-		-	0.00%
9000 Other Financing Sources		-	-		-	0.00%
Total Revenues & Other Financing Sources	14,859,543	6,168,325	13,090,661		1,768,882	88.10%
EXPENDITURES						
Matured Bond Expenditures	6,535,000	-	6,535,000	-	-	100.00%
Interest on Bonds	6,572,213	-	3,354,469	-	3,217,744	51.04%
Interfund Loan Interest	-	-	-	-	-	0.00%
Bond Transfer Fees	-	-	-	-	-	0.00%
Arbitrage Rebate		-	-	-	-	0.00%
Underwriter's fees		-	-	-	-	0.00%
Total Expenditures	13,107,213	-	9,889,469	-	3,217,744	75.45%
Other Financing Uses		-	-			
Excess Revenues/Other Financing Sources Over (under) Expend. & Oth Financing Uses	1,752,330	6,168,325	3,201,192			
Total Ending Fund Balance	\$ 7,745,000		\$ 9,390,449			
Ending Fund Balance Accounts						
GL 810 Reserved For Other Items			-			
GL 830 Reserved For Debt Service	5,992,670		1,655,164			
GL 889 Assigned to Fund Purposes	1,752,330		7,735,285			
GL 890 UnRsrvd Undsgntd Fnd Bal			-			
Total Ending Fund Balance	\$ 7,745,000		\$ 9,390,449			

Auburn School District No. 408
Transportation Vehicle Fund Budget Status
For the Month of April, 2016

	Annual Budget	Actual For Month	Total For Year	Encumb	Balance	Percent
TOTAL BEGINNING FUND BALANCE	\$ 1,398,615		\$ 2,070,231			
REVENUES AND OTHER FINANCING SOURCES						
1000 Local Taxes	-	-	8		(8)	0.00%
2000 Local Non-Tax	10,768	1,267	7,648		3,120	71.02%
3000 State, General Purpose		-	-		-	0.00%
4000 State, Special Purpose	740,000	-	-		740,000	0.00%
5000 Federal, General Purpose		-	-		-	0.00%
8000 Revenues from Other Agencies		-	-		-	0.00%
9000 Others Financing Sources		-	-		-	0.00%
Total Revenues & Other Financing Sources	750,768	1,267	7,656	-	743,112	1.02%
EXPENDITURES						
Type 30 Equipment	1,660,000	-	-	1,329,124	330,876	80.07%
Total Expenditures	1,660,000	-	-	1,329,124	330,876	80.07%
Excess Revenues/Other Financing Sources Over (under) Expend & Oth Financing Uses	(909,232)	1,267	7,656			
Total Ending Fund Balance	\$ 489,383		\$ 2,077,887			
Ending Fund Balance Accounts						
GL 819 Restricted for Fund Purposes	1,398,615		2,070,231			
GL 889 Assigned to Special Fund Purposes	(909,232)		7,656			
GL 890 UnRsrvd Undsgntd Fnd Bal			-			
Total Ending Fund Balance	\$ 489,383		\$ 2,077,887			

AUBURN SCHOOL DISTRICT No. 408

ASB FUND

APRIL, 2016

HIGH SCHOOLS

	Auburn High	Auburn Mountainview	Auburn Riverside	West Auburn	TOTAL
	401	405	408	504	
BEGINNING BALANCE	\$ 192,557.22	\$ 293,008.85	\$ 378,119.49	\$ 8,083.13	\$ 871,768.69
REVENUES	\$ 426,549.50	\$ 444,759.23	\$ 515,645.80	\$ 998.99	\$ 1,387,953.52
EXPENDITURES					
General	\$ 46,304.66	\$ 98,741.86	\$ 69,775.04	\$ 297.75	\$ 215,119.31
Athletics	91,911.37	37,355.40	67,524.36	-	196,791.13
Classes	4,735.94	10,026.83	14,578.11	-	29,340.88
Clubs	266,851.86	240,276.81	299,519.62	2.00	806,650.29
Private Monies	890.71	18,640.40	13,316.55	372.00	33,219.66
TOTAL EXPENDITURES	\$ 410,694.54	\$ 405,041.30	\$ 464,713.68	\$ 671.75	\$ 1,281,121.27
TRANSFERS					
General	\$ 31,583.00	\$ 19,128.32	\$ 50,797.72	\$ -	\$ 101,509.04
Athletics	(15,823.00)	(5,829.37)	(28,142.51)	-	(49,794.88)
Classes	(600.00)	(270.00)	(12,264.83)	-	(13,134.83)
Clubs	(15,160.00)	(11,471.18)	(10,390.38)	-	(37,021.56)
Private Monies	-	(1,557.77)	-	-	(1,557.77)
TOTAL TRANSFERS	\$ -	\$ -	\$ -	\$ -	\$ 0.00
OVER/ (UNDER)	\$ 15,854.96	\$ 39,717.93	\$ 50,932.12	\$ 327.24	\$ 106,832.25
ENDING BALANCE	\$ 208,412.18	\$ 332,726.78	\$ 429,051.61	\$ 8,410.37	\$ 978,600.94

AUBURN SCHOOL DISTRICT No. 408

ASB FUND

APRIL, 2016

MIDDLE SCHOOLS

	Cascade	Mt. Baker	Rainier	Olympic	TOTAL
	202	207	206	203	
BEGINNING BALANCE	\$ 75,400.79	\$ 56,277.45	\$ 99,861.62	\$ 103,013.60	\$ 334,553.46
REVENUES	\$ 64,796.66	\$ 73,136.44	\$ 75,029.24	\$ 34,443.52	\$ 247,405.86
EXPENDITURES					
General	\$ 30,917.94	\$ 18,423.15	\$ 13,612.25	\$ 12,291.06	\$ 75,244.40
Athletics	754.00	3,481.95	3,636.70	5,530.91	13,403.56
Classes	-	1,611.59	-	324.00	1,935.59
Clubs	18,806.50	27,741.12	33,421.58	8,864.24	88,833.44
Private Monies	815.58	1,087.48	1,309.17	2,070.76	5,282.99
TOTAL EXPENDITURES	\$ 51,294.02	\$ 52,345.29	\$ 51,979.70	\$ 29,080.97	\$ 184,699.98
TRANSFERS					
General	\$ 10,350.00	\$ 15,701.17	\$ 3,632.14	\$ 1,830.00	\$ 31,513.31
Athletics	(6,000.00)	(7,650.00)	(4,339.59)	(630.00)	(18,619.59)
Classes	(4,350.00)	(1,729.60)	-	-	(6,079.60)
Clubs	-	(6,321.57)	707.45	(1,200.00)	(6,814.12)
Private Monies	-	-	-	-	-
TOTAL TRANSFERS	\$ -	\$ -	\$ (0.00)	\$ -	\$ (0.00)
OVER/ (UNDER)	\$ 13,502.64	\$ 20,791.15	\$ 23,049.54	\$ 5,362.55	\$ 62,705.88
ENDING BALANCE	\$ 88,903.43	\$ 77,068.60	\$ 122,911.16	\$ 108,376.15	\$ 397,259.34

AUBURN SCHOOL DISTRICT NO. 408
PRIVATE PURPOSE TRUST FUND STATEMENT
April 30, 2016

REVENUES:

InvestED		20,410
Scholarship Donations:		
6003 Daan Ansingh	1,000	
6007 Pat Kuhlman	1,160	
6016 Auburn Community	(76)	
6023 Optimist Scholarship	2,000	
6057 Rachel Gives	1,602	
6060 ARHS Raven School	165	
6061 ARHS Sports Med	50	
6063 ARHS Viscom School	656	
6064 ARHS Yearbook	1,944	
6065 ARHS Counseling	1,633	
6066 AMHS Counselora	79	
6068 Burton/Moberg	500	
6076 Hirose Memorial	100	
6079 AHS Alumni	1,886	
6082 Dave Goethals	500	
6083 Juan Huseby	4,000	
6085 Walker Mens	500	
6103 Linda Cowan	150	
6105 Culinary Arts	1,565	
6110 Marilyn Valent	1,000	
6117 ARHS Cheer Schl	3,077	
6118 ARHS DECA	280	
6121 Andrew Bonwell	500	
6300 ROF Scholarship	214	
6402 American Legion	400	
6406 AAWP	800	
6407 AEA	4,001	
6410 PSEA	2	
6412 Molen Ortho	1,500	
6415 Bill Profit	2,329	
6416 Gillman Robinson	300	
6501 Invest Ed- AHS	6,350	
6502 Invest Ed - Casc	1,465	
6503 Invest Ed - Oly	1,370	
6505 Invest Ed - AMHS	6,475	
6520 Invest Ed - RAI	700	
6521 Invest Ed - WAHS	610	
6527 Invest Ed - MTB	800	
6528 Invest Ed - ARHS	2,810	
7003 Pioneer Shoe Fund	1,800	
7004 ARHS Win Wishes	4,552	
7005 AHS Booster Club	10,400	
7006 Native Am Students	15,000	
7010 Food Bank	816	
Total Scholarship Donations		86,966
Interest Allocation Adjustments		-2
Interest		2,170
Total Revenues		89,134

EXPENDITURES:

InvestED	20,012
6015 Dick Scobee mem	-2,000
6018 AHS Jr Masonic	-100
6065 ARHS Counseling	350
6088 Volney Wolters	-500
6103 Linda Cowan	-250
6105 Culinary Arts	1,500
6405 AAEOB	300
6406 AAWP	200
7003 Pioneer Shoe Fund	643
7004 ARHS Win Wishes	2,403
7005 AHS Booster Club	9,643
7006 Native Am Students	10,437
7009 Chinook Shoe Fund	253
7010 Food Bank	816
Total Expenditures	<u>43,707</u>
Excess of Revenue over (under) Expenditure	45,427
Fund Balance - Beginning of the Year	<u>538,192</u>
Fund Balance - Year to Date	<u><u>\$ 583,619</u></u>

AUBURN SCHOOL DISTRICT NO 408
NBN Employee Benefits Trust Fund Statement
April 30, 2016

ADDITIONS:

Contributions from Plan Members	\$ 183,979.00
Investment Earnings	<u>459.02</u>
Total Additions	<u>184,438.02</u>

DEDUCTIONS:

Benefits Claims	144,159.41
State Program Fees	<u>-</u>
Total Deductions	<u>144,159.41</u>

NET DEDUCTIONS 40,278.61

Net Assets at Beginning of Year 132,368.51

Net Assets Year To Date \$ 172,647.12

AUBURN SCHOOL DISTRICT NO. 408
Local Grants Received in April, 2016

Donor	Recipient	Amount
WA Public Relations - Chicago Conference	ASD	\$1,500.00
Coca Cola	Alpac	\$21.08
Reader Board Donor Not Specified	Evergreen	\$20.00
Chinook Staff - Buses 4th Grade F/T	Chinook	\$800.00
Spirit & Pride	Chinook	\$32.00
Dorian	Lea Hill	\$703.73
Vending Machine Rebate	Lea Hill	\$10.15
Parent Donation - Dance	Terminal Park	\$57.00
Food Bank	Terminal Park	\$50.00
Kroger Rebate	Terminal Park	\$57.62
PTA Donation	Hazelwood	\$95.67
United Way	Olympic	\$1,500.00
ICF International	AHS	\$500.00
Straight A Remodel	Head Start	\$25.00
Total		<u><u>\$5,372.25</u></u>

1. Approval of Minutes

Recommendation: That the minutes be approved.

Recommendation: It is requested the board acknowledges support of these projects and the letter of support be signed by the Board President.

Recommendation: That the board approve a special board meeting to be held on Monday, June 27, 6:00 p.m. for the purpose of evaluating the superintendent.

An executive session will be held to discuss issues relating to RCW 42.30.110(b), to consider the selection of a site or the acquisition of real estate by lease or purchase.



May 23, 2016

Director, School Facilities and Organization
Office of the Superintendent of Public Instruction
P.O. Box 47200
Olympia, WA 98504-7200

RE: Letter of Support for Healthy Kids-Healthy Schools Grant

Dear Director:

The Auburn School District Board of Directors has pledged their support to sustain the improvements funded by a Healthy Kids-Healthy Schools grant.

Our school district is committed to providing all students with the educational foundation necessary to succeed. We have set high standards in what is taught in our classrooms and all areas of the school that have a direct impact on our students. We consider the condition of our facilities, the meals we serve, and the options we have for active play to be critical components of our educational environment. Healthy, well-fed students are more apt to succeed.

The district has received a preliminary grant award in the amount of **\$103,662**. The following projects are included in the grant:

Gildo Rey Elementary: PE/Play for \$46,662
Pioneer Elementary: PE/Play for \$57,000

We will complete these projects before the end of June, 2017. The Board will provide district resources in the form of operating funds, capital maintenance, or staffing and staff training needed to sustain the practices, processes, and policies, and maintain the improved or new facilities, brought about by these grant-funded improvements.

The Auburn School District consistently addresses facility maintenance and improvements by planning, documenting and tracking the needs of our school buildings. We do that by: *(select one or more of the following)*

☐ An Asset Preservation System, also known as a school maintenance plan. The plan must follow the requirements in the [OSPI Asset Preservation Program](#). If applicable, you may submit the letter of certification submitted to OSPI School Facilities attesting to the use of APP.

☒ Use of a maintenance management software program such as SCHOOLDUDE Maintenance Essentials Pro. These types of programs track work orders and schedule preventative maintenance.

May 23, 2016

Page 2

☐ A school district Facilities Maintenance Plan.

☐ Short- and long-term capital budget planning/request that includes preventative maintenance.

☐ Other – please describe.

Our application includes expected outcomes and a method for measuring outcomes for each project proposal. We agree to share the results of our work with OSPI.

Sincerely,

Anne Baunach

President, Auburn School District Board of Directors